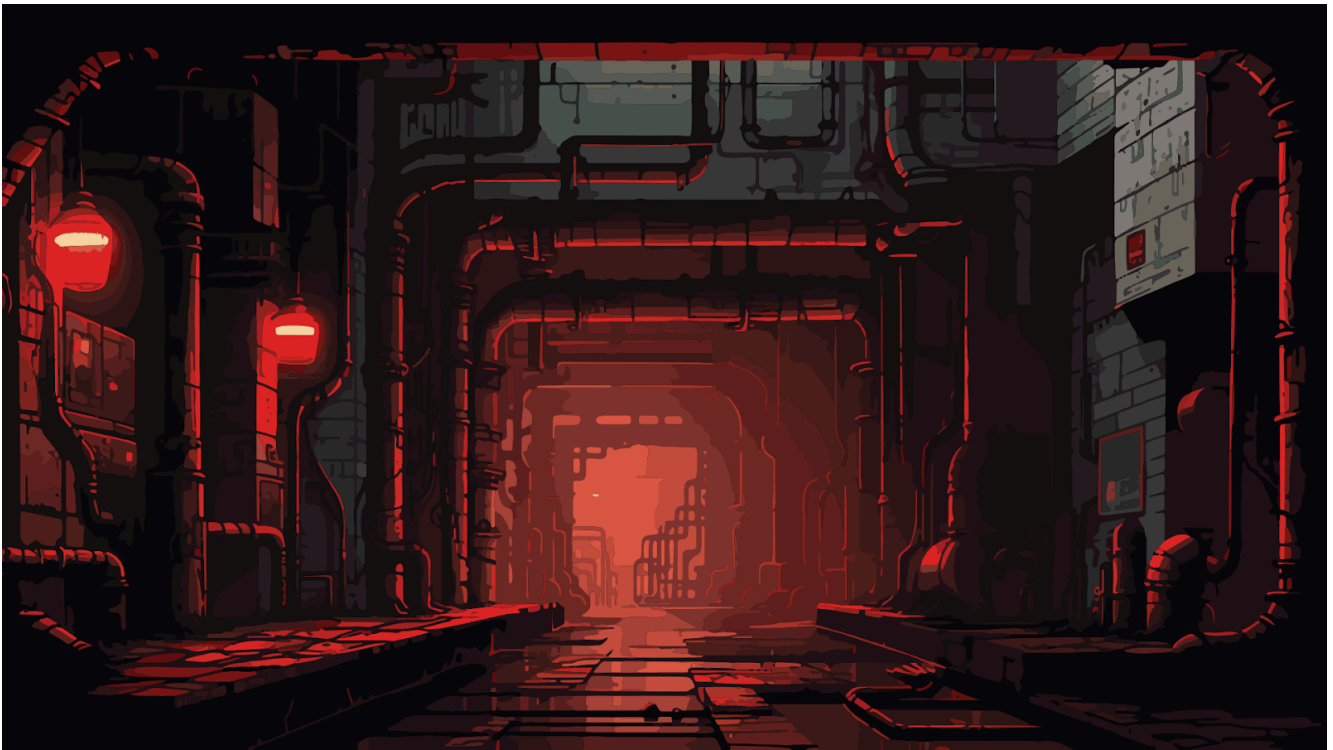


SAINTCON

OFFICIAL MINIBADGE

Assembly Guide 2024



This guide provides assembly instructions and guides for SAINTCON MiniBadges.

v1.0 10/1/2024

RARITY: This term is a little subjective, but is based on the following general guidelines:

500+ Available - Very Common
300 - 500 Available - Common
200 - 300 Available - Uncommon
100 - 200 Available - Rare
100 or fewer - Super Rare
10 or fewer - Not Included

DIFFICULTY: This is the basic definition of assembly difficulty:

BEGINNER: Generally uses large components, and with some basic soldering skills, this badge should be simple to assemble for most people.

INTERMEDIATE: Badges with this rating should not scare you away from assembling them. They get this rating when they use smaller components that might require a little more attention or steady hand to assemble. This could also indicate some level of complexity.

ADVANCED: Badges with this rating are generally for those with more refined soldering skills. Components are generally small and require a very steady and nimble hand to solder manually. We still encourage you to try. Using solder-paste and an oven can make this easier.

TYPES: We have done our best to compile in this guide an assembly guide for all known Minibadges.

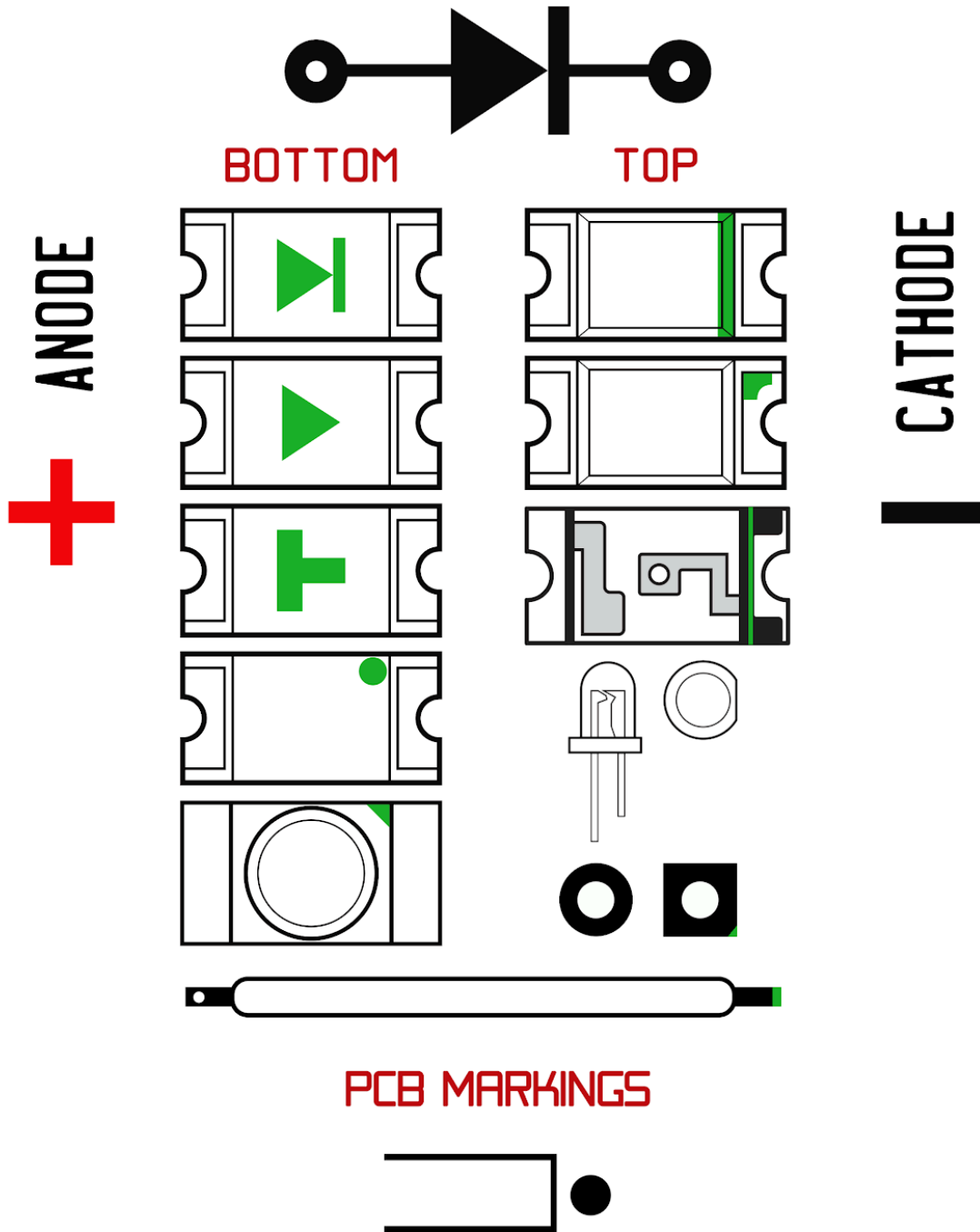
These badges fall into the following categories:

OFFICIAL: Badges designed specifically for the conference, and are acquired as part of the efforts to participate and explore what the conference has to offer.

SPONSOR: Badges designed by/for our proud sponsors. We are excited to see more sponsor minibadges than ever before.

PERSONAL: Many minibadge creators are super proud of their works, and are bringing badges to the conference for trading or to use for networking with people. These are not supported directly by the conference, but are featured here for convenience and assembly help.

LED ORIENTATION GUIDE



**HAND SOLDERING:
NEVER SOLDER SMD COMPONENTS ABOVE 350°C.
SOLDERING ABOVE THIS TEMPERATURE WILL CAUSE DAMAGE!**

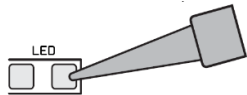
When hand-soldering Surface Mount Devices (SMD), the easiest method is to solder one-pad at a time, and it's called the Single-Pad Soldering Method.

Here's how it works:

**SINGLE-PAD
SOLDERING
METHOD**

Regardless of how many contacts there are, it is important to only ever add solder to ONE PAD until the component is attached to the board. For example, with a standard LED here is how you would complete this process:

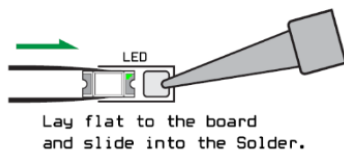
1. Use the soldering-iron to heat up and add a SMALL dab of solder to one side of the attachment pads



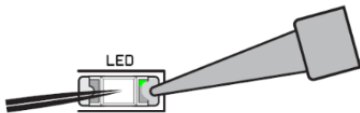
2. Use tweezers to carefully hold the LED with one side of the exposed contacts sticking out. For LEDs be sure to use the right orientation to avoid attaching the component backwards.



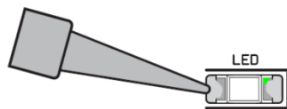
3. Re-Heat the solder placed on the single-pad with the iron, and carefully slide one side of the LED component into the molten solder.



4. Remove the heat, and allow the component to connect to the board. Once attached, use tweezers to gently rest on the top of the LED, and reheat the solder one last time. This will allow the component to settle flat to the board.



5. Once attached and flat to the board, use the iron to add a SMALL dab of solder to the other side of the LED to complete the attachment. Very little solder is needed.



SAINTCON MINIBADGE

OFFICIAL MINIBADGES

The following badges are contributed by various minibadge creators and are included here for reference. Any issues with these badges should be referred to the creator.



OFFICIAL	SPONSOR	COMMUNITY	EVENT	CONTEST	AWARD	PERSONAL	BADGE ACCESSORY
2	12	17	5	9	0	89	3
							OTHER
							3

FRONT



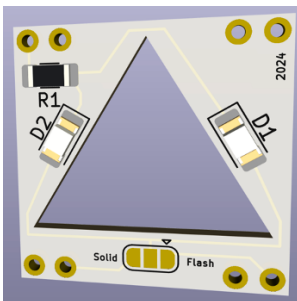
SPONSOR MINIBADGE

Arctic Wolf

Designed By: Cyberm3n

2024's Sponsor badge for Arctic Wolf

BACK



DIFFICULTY:

BEGINNER

RARITY:

UNCOMMON

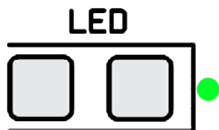
HOW DO I GET ONE?

Stop by our Booth
Talk/Trade with Arctic Wolf employee
Just ask me for one

ASSEMBLY INSTRUCTIONS:

- Solder 10 Ω resistor to R1
- Solder LED to D1 & D2
- Cut header PIN(s) to size as needed
- Solder Tall PIN(s) into bottom Vias of bottom and top boards (Ensure solder penetration of all Vias)
- Solder Regular PIN(s) into top Vias
- Solder Jumper to either Flash or Solid

BOARD/LED TYPE:



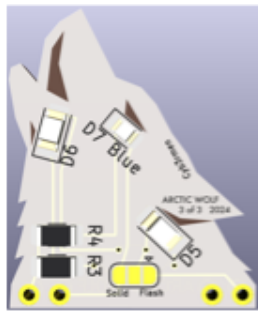
PARTS USED:

- 1206 LEDs (White or Blue)
- 1206 Resistor

FRONT



BACK



SPONSOR MINIBADGE

Howling Wolf (Arctic Wolf)

Designed By: Cyberm3n

The howling wolf of Arctic Wolf; is part of a set (potentially 100 complete sets)

DIFFICULTY:

BEGINNER

RARITY:

SUPER RARE

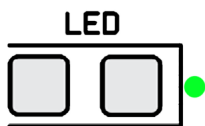
HOW DO I GET ONE?

Talk to an Arctic Wolf employee; do a trick or provide a trade

ASSEMBLY INSTRUCTIONS:

- Solder 10 Ω resistor to R1 & R2
- Solder White LED to D5 & D6
- Side Mount/Solder Blue LED to D7 Blue
- Cut header PIN(s) to size as needed
- Solder PIN(s) to board
- Solder Jumper to either Flash or Solid
- OPTIONAL Cover LEDs with Hot Glue as a diffuser

BOARD/LED TYPE:



PARTS USED:

- 1206 LED
- 0805 LED
- 1206 Resistor

PART OF SET:

Arctic Wolf
Set 1 of 3

FRONT



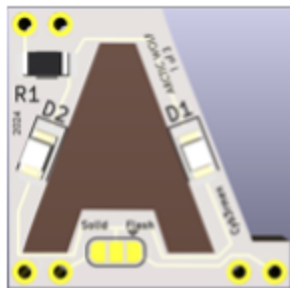
SPONSOR MINIBADGE

Letter A (Arctic Wolf)

Designed By: Cyberm3n

The letter A of of Arctic Wolf; is part of a set (potentially 100 complete sets)

BACK



DIFFICULTY:

BEGINNER

HOW DO I GET ONE?

Talk to an Arctic Wolf employee; do a trick or provide a trade

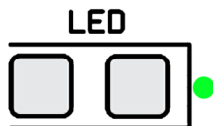
RARITY:

SUPER RARE

ASSEMBLY INSTRUCTIONS:

- Solder 10 Ω resistor to R1
- Solder Blue LED to D1 & D2
- Cut header PIN(s) to size as needed
- Solder PIN(s) to board
- Solder Jumper to either Flash or Solid
- OPTIONAL Cover LEDs with Hot Glue as diffuser

BOARD/LED TYPE:



PARTS USED:

- 1206 LEDs
- 1206 Resistor

PART OF SET:

Arctic Wolf
Set 2 of 3

FRONT



SPONSOR MINIBADGE

Letter W (Arctic Wolf)

Designed By: Cyberm3n

Letter W of Arctic Wolf; is part of a set (potentially 100 complete sets)

BACK



DIFFICULTY:

BEGINNER

HOW DO I GET ONE?

Talk to an Arctic Wolf employee; do a trick or provide a trade

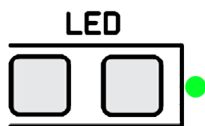
RARITY:

SUPER RARE

ASSEMBLY INSTRUCTIONS:

- Solder 10 Ω resistor to R2
- Solder Blue LED to D3 & D4
- Cut header PIN(s) to size as needed
- Solder PIN(s) to board
- Solder Jumper to either Flash or Solid
- OPTIONAL Cover LEDs with Hot Glue as diffuser

BOARD/LED TYPE:



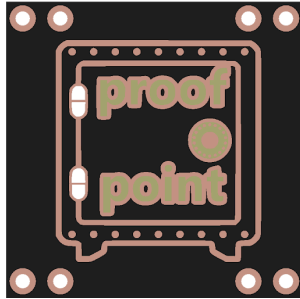
PARTS USED:

- 1206 LEDs
- 1206 Resistor

PART OF SET:

Arctic Wolf Set
3 of 3

FRONT



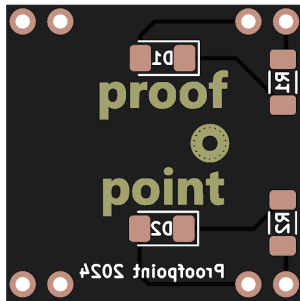
SPONSOR MINIBADGE

Proofpoint

Designed By: Hollyhacker

Proofpoint Email Security will keep your email system locked up tight.

BACK



DIFFICULTY:
BEGINNER

RARITY:
RARE

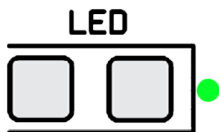
HOW DO I GET ONE?

You can get one of the badges by visiting the proofpoint booth, tracking down Boris, or messaging him on the saintcon Discord PassivlyOffside

ASSEMBLY INSTRUCTIONS:

Basic SMD Pad Soldering Method

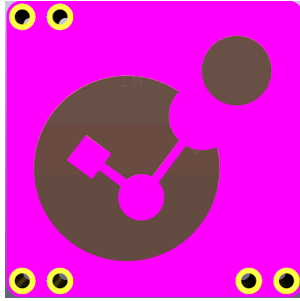
BOARD/LED TYPE:



PARTS USED:

1206 100R Resistor
1206 LED

FRONT



SPONSOR MINIBADGE

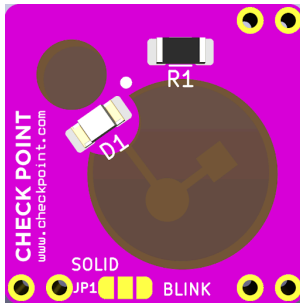
Checkpoint Security Saintcon Official Sponsor Minibadge

Designed By: Jup1t3r

Protect What Matters Most!

Our Infinity Platform delivers AI-powered and cloud-delivered cyber security across your entire enterprise: network, cloud, and workspace.

BACK



DIFFICULTY:

BEGINNER

RARITY:

RARE

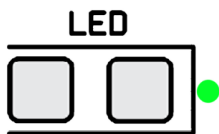
HOW DO I GET ONE?

Come visit our booth and learn how we can help you protect what matters most!

ASSEMBLY INSTRUCTIONS:

- Begin on the back side first.
- Solder the LED(s) first, using the single-pad method for hand soldering.
- Solder the Resistor(s) using the same single-pad method for hand soldering.
- Solder the jumper. (Pads at the bottom.) Either both of the right pads to make the badge blink or solder both of the left pads together to have the LED stay solid on.
- Solder the 4x 2-Position headers.

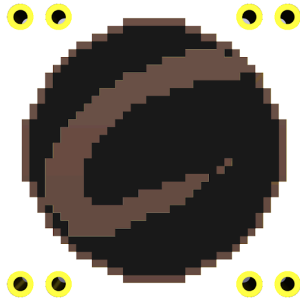
BOARD/LED TYPE:



PARTS USED:

- 1206 LED
- 1206 RESISTOR
- FR4 PCB
- 2-Pin Pin Headers

FRONT



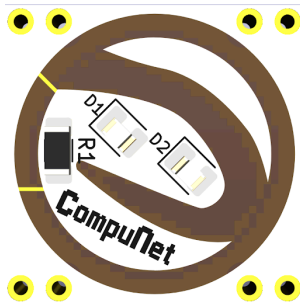
SPONSOR MINIBADGE

Compunet Official Saintcon Sponsor Badge

Designed By: Jup1t3r

Compunet provides seamless audio and visual solutions to facilitate efficient meetings and communications. Systems are specifically designed for your unique space. Our team of highly skilled engineers take the lead in designing, developing, and implementing solutions that address complex business challenges.

BACK



DIFFICULTY:

BEGINNER

HOW DO I GET ONE?

Come visit our boot and chat about our partners and the many solutions we offer!

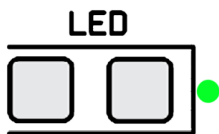
RARITY:

UNCOMMON

ASSEMBLY INSTRUCTIONS:

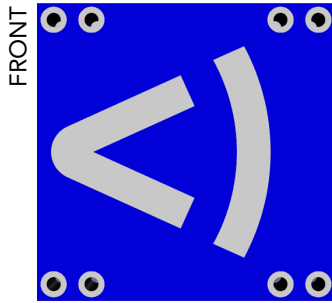
- Begin on the back side first.
- Solder the LED(s) first, using the single-pad method for hand soldering.
- Solder the Resistor(s) using the same single-pad method for hand soldering.
- Solder the 4x 2-Position headers.

BOARD/LED TYPE:



PARTS USED:

- 1206 LED
- 1206 RESISTOR
- FR4 PCB
- 2-Pin Pin Headers



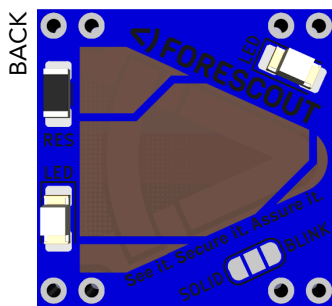
SPONSOR MINIBADGE

Forescout Official Sponsor Minibadge

Designed By: Jup1t3r

The Forescout Advantage:

Forescout is the only automated cybersecurity company that continuously identifies, protects and ensures the compliance of all managed and unmanaged assets – IT, IoT, IoMT and OT – so you can more effectively manage cyber risk and mitigate threats.



DIFFICULTY:
BEGINNER

RARITY:
RARE

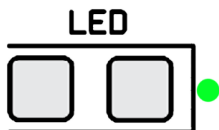
HOW DO I GET ONE?

Come visit our booth and chat about how Forescout can help you secure your IOT devices.

ASSEMBLY INSTRUCTIONS:

- Begin on the back side first.
- Solder the LED(s) first, using the single-pad method for hand soldering.
- Solder the Resistor(s) using the same single-pad method for hand soldering.
- Solder the jumper. (Pads at the bottom.) Either both of the right pads to make the badge blink or solder both of the left pads together to have the LED stay solid on.
- Solder the 4x 2-Position headers.

BOARD/LED TYPE:



PARTS USED:

- 1206 LED
- 1206 RESISTOR
- FR4 PCB
- 2-Pin Pin Headers

FRONT



SPONSOR MINIBADGE

VLCM Official Saintcon Sponsor Minibadge

Designed By: Jup1t3r

"We could not be more excited to have VLCM back again this year and partner with us at this level. Their Minibadge design is of a rabid ferret, which is Valcom's Cybersecurity mascot."

BACK



DIFFICULTY:
BEGINNER

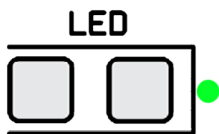
RARITY:
COMMON

HOW DO I GET ONE?
Come chat with us about our great solutions!

ASSEMBLY INSTRUCTIONS:

- Begin on the back side first.
- Solder the LED(s) first, using the single-pad method for hand soldering.
- Solder the Resistor(s) using the same single-pad method for hand soldering.
- Solder the 4x 2-Position headers.

BOARD/LED TYPE:



PARTS USED:

- 1206 LED
- 1206 RESISTOR
- FR4 PCB
- 2-Pin Pin Headers

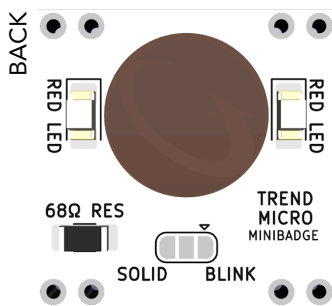


SPONSOR MINIBADGE

TREND MICRO Saintcon Sponsor Minibadge

Designed By: Jup1t3r

Trend Micro is here again as one of our amazing sponsors of Saintcon this year. Trusted by 500,000 Trend Micro customers globally to swiftly detect and respond to threats. Better understand, communicate and mitigate cyber risk across your enterprise with Trend.



DIFFICULTY:
BEGINNER

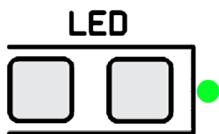
HOW DO I GET ONE?
You can obtain this badge by visiting their booth and interacting with any of their staff.

RARITY:
UNCOMMON

ASSEMBLY INSTRUCTIONS:

- Begin on the back side first.
- Solder the LED(s) first, using the single-pad method for hand soldering.
- Solder the Resistor(s) using the same single-pad method for hand soldering.
- Solder the 4x 2-Position headers.

BOARD/LED TYPE:



PARTS USED:

- 1206 LED
- 1206 RESISTOR
- FR4 PCB
- 2-Pin Pin Headers

FRONT



SPONSOR MINIBADGE

Chief Varonis

Designed By: SHIFTY/Hollyhacker/Varonis

Varonis is the guardian of your Digital assets . Make sure you have them in place to protect your Digital assets

BACK



DIFFICULTY:

BEGINNER

HOW DO I GET ONE?

Visit the Varonis Booth, Find JD , He is also known to wear a full suit that clearly identifies him as crazy ...

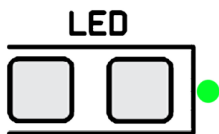
RARITY:

UNCOMMON

ASSEMBLY INSTRUCTIONS:

Basic SMD Soldering Pad Method

BOARD/LED TYPE:



PARTS USED:

1206 100R Resistors

1206 Green SMD LED

Varonis has 3 color variants of the PCB

FRONT



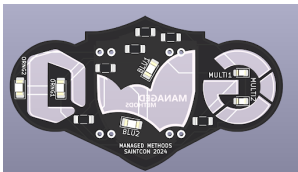
SPONSOR MINIBADGE

Managed Methods Minibadge

Designed By: Sponsor

Managed Methods. Is one of our amazing sponsors this year. Focusing on K-12 Cybersecurity products to keep your environment secure. "In the Dark of the web, Managed Methods is the light!"

BACK



DIFFICULTY:
BEGINNER

RARITY:
RARE

HOW DO I GET ONE?

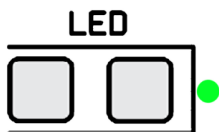
Stop by and visit our Sponsor Booth!

Scan the QR Code Below for detailed build instructions and to learn more about our company.

ASSEMBLY INSTRUCTIONS:

- Begin on the back side first.
- Leds and resistors are labeled on the back of the board.
- Solder the LED(s) first, using the single-pad method for hand soldering.
- Solder the Resistor(s) using the same single-pad method for hand soldering.
- Solder the 4x 2-Position headers.

BOARD/LED TYPE:



PARTS USED:

1206 LED
 1206 RESISTOR
 FR4 PCB
 2-Pin Pin Headers

Scan For
Assembly
Instructions:



FRONT



OFFICIAL MINIBADGE

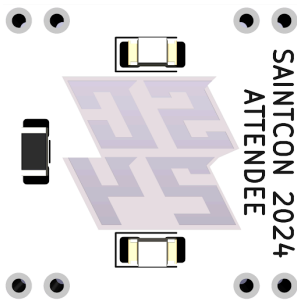
Official Attendee Minibadge

Designed By: Jup1t3r

WELCOME TO SAINTCON 2024! Every year Saintcon Committee, Staff, Volunteers, and many others spend countless countless hours making Saintcon the best conference of your year.

We are grateful to be able to do this for the community and hope you have a great time learning, hacking, and working with friends, old and new. If you have been coming to Saintcon for 20 years, or if this is your first time. Welcome!

BACK



DIFFICULTY:

BEGINNER

HOW DO I GET ONE?

Get your ticket for Saintcon and be ready to experience the Con!

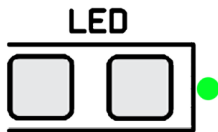
RARITY:

COMMON

ASSEMBLY INSTRUCTIONS:

- Begin on the back side first.
- Solder the LED(s) first, using the single-pad method for hand soldering.
- Solder the Resistor(s) using the same single-pad method for hand soldering.
- Solder the 4x 2-Position headers.

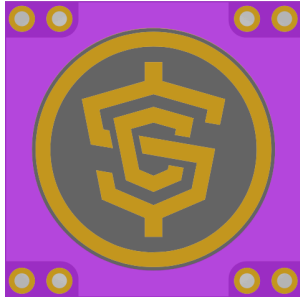
BOARD/LED TYPE:



PARTS USED:

- 1206 LED
- 1206 RESISTOR
- FR4 PCB
- 2-Pin Pin Headers

FRONT



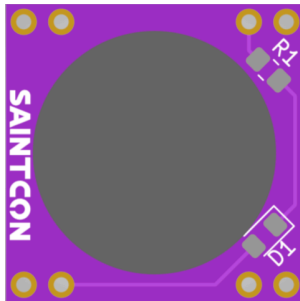
OFFICIAL MINIBADGE

Saintcon Store Official Minibadge

Designed By: Jup1t3r

The Saintcon store is an official staple of the con. The store grows every year with more and more amazing products and sponsored products from some of the best in the business.

BACK



DIFFICULTY:
BEGINNER

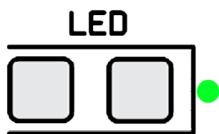
HOW DO I GET ONE?
Free with purchase while supplies last!

RARITY:
COMMON

ASSEMBLY INSTRUCTIONS:

- Begin on the back side first.
- Solder the LED(s) first, using the single-pad method for hand soldering.
- Solder the Resistor(s) using the same single-pad method for hand soldering.
- Solder the 4x 2-Position headers.

BOARD/LED TYPE:



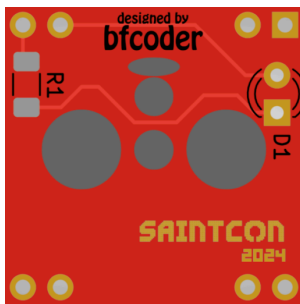
PARTS USED:

- 1206 LED
- 1206 RESISTOR
- FR4 PCB
- 2-Pin Pin Headers

FRONT



BACK



COMMUNITY MINIBADGE

Homelabs Community Minibadge

Designed By: bfcoder

Home Labs is a community of IT professionals and hobbyists who sharpen their skills for their \$dayjob while building cool stuff at home.

This community will be a space where you can talk about projects you are working on, work on – or better yet submit – some lab guides of cool solutions you have built, check out awesome demos, and join in with your fellow dumpster-diving hardware enthusiasts.

DIFFICULTY:

BEGINNER

RARITY:

RARE

HOW DO I GET ONE?

Come and participate to get one of these unique Minibadges.

ASSEMBLY INSTRUCTIONS:

- Begin on the back side first.
- Solder the LED(s) first, using the single-pad method for hand soldering.
- Solder the Resistor(s) using the same single-pad method for hand soldering.
- Solder the 4x 2-Position headers.

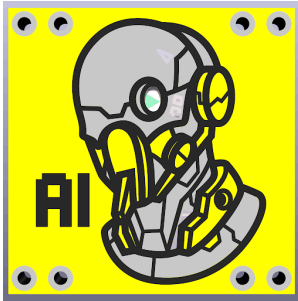
BOARD/LED TYPE:



PARTS USED:

- 1206 LED
- 1206 RESISTOR
- FR4 PCB
- 2-Pin Pin Headers

FRONT



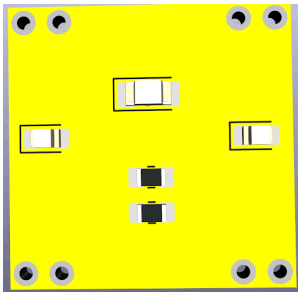
COMMUNITY MINIBADGE

AI Community Minibadge

Designed By: Jup1t3r

Would you like to play a game? Come to the AI Community for gamified challenges or get hands-on with some of the latest AI tech available including Chat GPT 4o, Claude 3.5, and Dall-e, Midjourney, and many other ground-breaking models.

BACK



DIFFICULTY:
INTERMEDIATE

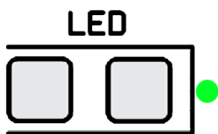
HOW DO I GET ONE?
Come visit our community and participate!

RARITY:
RARE

ASSEMBLY INSTRUCTIONS:

- Begin on the back side first.
- Solder the 0805 LED(s) first, using the single-pad method for hand soldering.
- Solder the 1206 LED for the eye reversed, so the led faces the hole.
- Solder the Resistor(s) using the same single-pad method for hand soldering.
- Solder the 4x 2-Position headers.

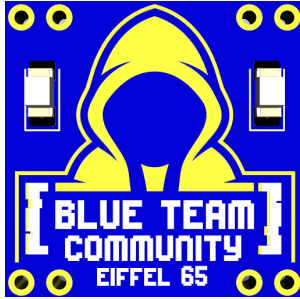
BOARD/LED TYPE:



PARTS USED:

- 1x1206 LED
- 2x0805 LEDs
- 2x0805 RESISTORS
- FR4 PCB
- 2-Pin Pin Headers

FRONT



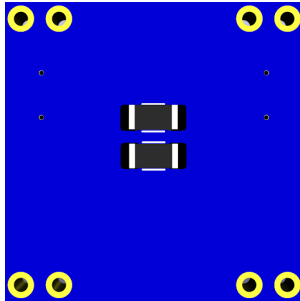
COMMUNITY MINIBADGE

Eiffel65 Blue Team Community Minibadge

Designed By: Jup1t3r

Eiffel65 is a blue team (defensive security) community. In this shade of Blue we'll entertain the topics of Threat Intelligence, Threat Hunting, Incident Response, and Forensics. You can expect to get a taste of the day to day responsibilities, duties, and tools in these areas.

BACK



DIFFICULTY:

BEGINNER

HOW DO I GET ONE?

Come and participate in our community.

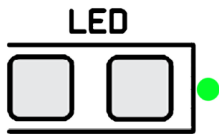
RARITY:

UNCOMMON

ASSEMBLY INSTRUCTIONS:

- Begin on the back side first.
- Solder the LED(s) first, using the single-pad method for hand soldering.
- Solder the Resistor(s) using the same single-pad method for hand soldering.
- Solder the 4x 2-Position headers.

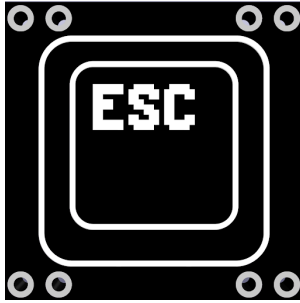
BOARD/LED TYPE:



PARTS USED:

- 1206 LED
- 1206 RESISTOR
- FR4 PCB
- 2-Pin Pin Headers

FRONT



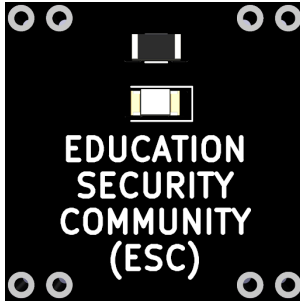
COMMUNITY MINIBADGE

Education Security Community Minibadge (ESC)

Designed By: Jup1t3r

Our community will focus on the security needs and collaboration that is helpful for our K12, higher education and library educational communities. Presentations, walk-ups and hands-on workshops will focus on open discussions and real-world cybersecurity experiences in the education environment.

BACK



DIFFICULTY:

BEGINNER

RARITY:

UNCOMMON

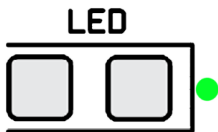
HOW DO I GET ONE?

Come learn how we defend against, and educate student "hackers" and other highly important educational organizations cybersecurity topics.

ASSEMBLY INSTRUCTIONS:

- Begin on the back side first.
- Solder the LED(s) first, using the single-pad method for hand soldering.
- Solder the Resistor(s) using the same single-pad method for hand soldering.
- Solder the 4x 2-Position headers.

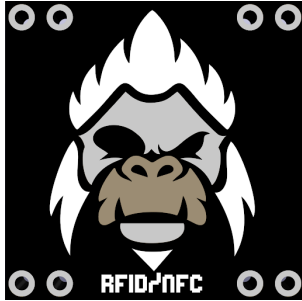
BOARD/LED TYPE:



PARTS USED:

- 1206 LED
- 1206 RESISTOR
- FR4 PCB
- 2-Pin Pin Headers

FRONT



COMMUNITY MINIBADGE

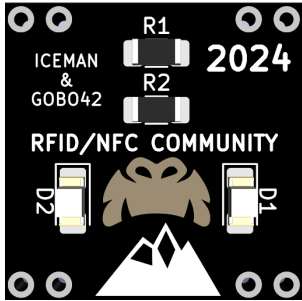
RFID Community Minibadge

Designed By: Jup1t3r

Come and visit our community to discover how short range wireless communication through RFID works, and how you can take advantage of it, or secure it.

We can help you explore the various tools and techniques that can be used to read/store/replay/sniff/scan/bruteforce RFID systems.

BACK



DIFFICULTY:
BEGINNER

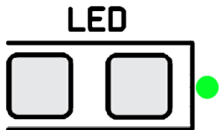
HOW DO I GET ONE?
Come and participate in our community!

RARITY:
RARE

ASSEMBLY INSTRUCTIONS:

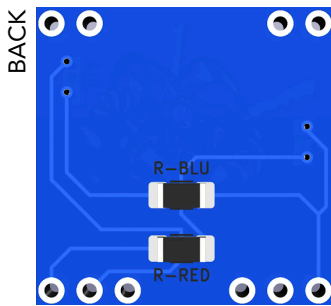
- Begin on the back side first.
- Solder the LED(s) first, using the single-pad method for hand soldering.
- Solder the Resistor(s) using the same single-pad method for hand soldering.
- Solder the 4x 2-Position headers.

BOARD/LED TYPE:



PARTS USED:

- 1206 LED
- 1206 RESISTOR
- FR4 PCB
- 2-Pin Pin Headers



COMMUNITY MINIBADGE

Lockpick Community Minibadge

Designed By: Jup1t3r

"Lock Picking is a security "right of passage". Your journey begins here!

Whether you are new or experienced with lock picking, the Lock Picking Community is a must stop. This is a great skill to help you learn about physical security and that everything has vulnerabilities. We will have lock picking instructions, challenges, and plenty of practice time for you to learn and develop your skills. "

DIFFICULTY:

INTERMEDIATE

RARITY:

COMMON

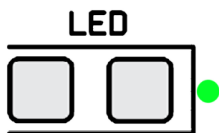
HOW DO I GET ONE?

Come and Level up in the lockpicking community. As you Level up your skills, this badge has replaceable belts that will take you thorough the lockpick belt system. See how far you can level up while your at the CON!

ASSEMBLY INSTRUCTIONS:

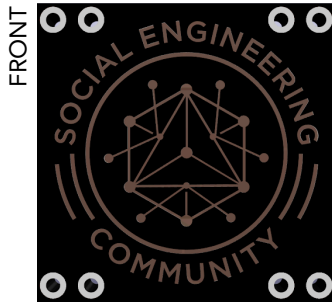
- Solder the LEDs first, using the single-pad method for hand soldering.
- Make sure to solder the LEDS in the indicated spots on the board.
- Solder the resistor using the single-pad method for hand soldering.
- Solder the Pin Headers to the Badge in the 4 corners only.
- The additional 2 center pins are for belts you earn along the way.

BOARD/LED TYPE:



PARTS USED:

1206 LED
1206 RESISTOR
FR4 PCB
2-Pin Pin Headers

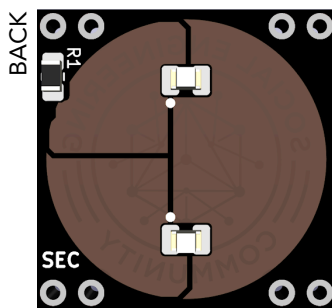


COMMUNITY MINIBADGE

Social Engineering Community Minibadge

Designed By: Jup1t3r

Social engineering community is here for the first time at SAITNCON. Come test your social engineering skills!



DIFFICULTY:
INTERMEDIATE

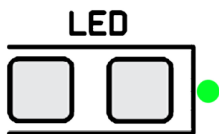
HOW DO I GET ONE?
Come and visit our community!

RARITY:
COMMON

ASSEMBLY INSTRUCTIONS:

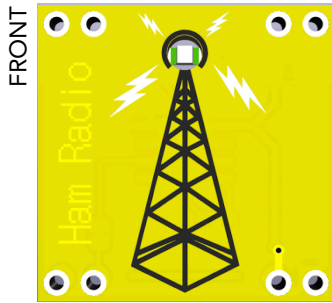
- Begin on the back side first.
- Solder the LED(s) first, using the single-pad method for hand soldering.
- Solder the Resistor(s) using the same single-pad method for hand soldering.
- Solder the 4x 2-Position headers.

BOARD/LED TYPE:



PARTS USED:

- 0805 LED
- 0805 RESISTOR
- FR4 PCB
- 2-Pin Pin Headers

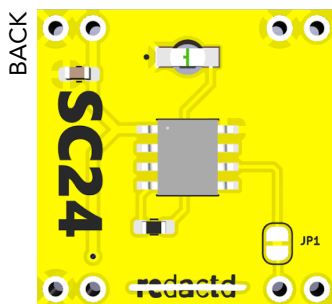


COMMUNITY MINIBADGE

Ham Radio Community Minibadge

Designed By: Redactd, RAY-MAN

Ham Radio has been considered to be the original group of hackers, launching before computers, integrated circuits, and even the transistor! Hams of all generations have a hacker mindset, solving problems their own way, regardless of what the manual has to say. Continuing this pioneer spirit, the Ham Radio Community is here to support advancement of the hobby with a cybersecurity slant.



DIFFICULTY:
INTERMEDIATE

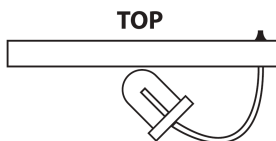
HOW DO I GET ONE?
Come and visit our community and tell us your handle!

RARITY:
UNCOMMON

ASSEMBLY INSTRUCTIONS:

- Begin on the back side first.
- Solder the LED(s) first, using the single-pad method for hand soldering.
- Solder the Resistor(s) using the same single-pad method for hand soldering.
- Solder the 4x 2-Position headers.

BOARD/LED TYPE:



PARTS USED:

- 1206 LED
- 1206 RESISTOR
- FR4 PCB
- 2-Pin Pin Headers

FRONT



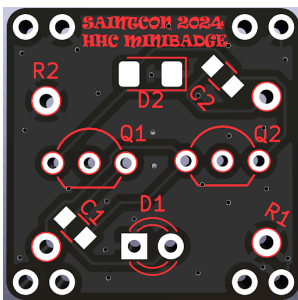
COMMUNITY MINIBADGE

2024 Hardware Hacking Community MiniBadge

Designed By: RuShan

HHC brings you a new minibadge that brings back some of the puzzle minibadge dynamics in an easier project that also teaches you how to solder. The circuit is a dual transistor flashing circuit to alternate the through hole led with the smd led. This is the minibadge HHC will hand out and use to teach soldering as well. It does have two PCBs that stack to make for a nice art piece.

BACK



DIFFICULTY:
INTERMEDIATE

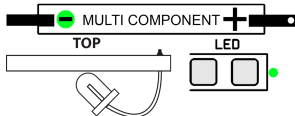
HOW DO I GET ONE?
HHC booth and the learn to solder class

RARITY:
COMMON

ASSEMBLY INSTRUCTIONS:

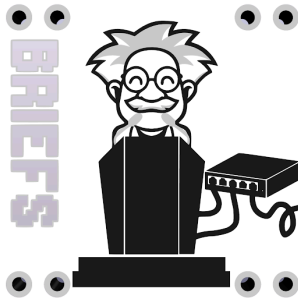
<https://youtu.be/sR8GluKkJxs>

BOARD/LED TYPE:



PARTS USED:

FRONT



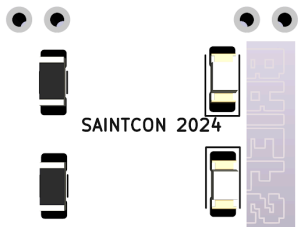
COMMUNITY MINIBADGE

Briefs Community Minibadge

Designed By: SHIFTY

Briefs is your chance to speak in front of your peers. Casual, small room environment, on any topic you that interests you, and you would like to share with others. A fun project you've dabbled in, that was a wild success, or crash and burn failure. But what did you learn from the experience that others can build on, or give advice. Come share. The only caveat, the talk is 10 minutes or less.

BACK



DIFFICULTY:

BEGINNER

HOW DO I GET ONE?

Sign up and give a presentation. 10 Minutes or less.

RARITY:

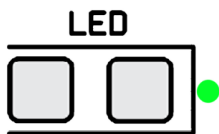
UNCOMMON

SHIFTY

ASSEMBLY INSTRUCTIONS:

- Begin on the back side first.
- Solder the LED(s) first, using the single-pad method for hand soldering.
- Solder the Resistor(s) using the same single-pad method for hand soldering.
- Solder the 4x 2-Position headers.

BOARD/LED TYPE:



PARTS USED:

- 1206 LED
- 1206 RESISTOR
- FR4 PCB
- 2-Pin Pin Headers

FRONT



COMMUNITY MINIBADGE

Space Community Minibadge

Designed By: SHIFTY

The space community is an experience that is out of this world. You'll delve into the cutting-edge technologies powering satellites, communication networks, and rockets that fuel space exploration. As space becomes increasingly interwoven with our terrestrial networks, this community is at the forefront of ensuring the cybersecurity of these critical systems.

BACK



DIFFICULTY:

BEGINNER

HOW DO I GET ONE?

Come and participate in our community.

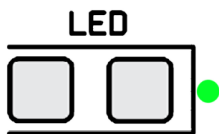
RARITY:

UNCOMMON

ASSEMBLY INSTRUCTIONS:

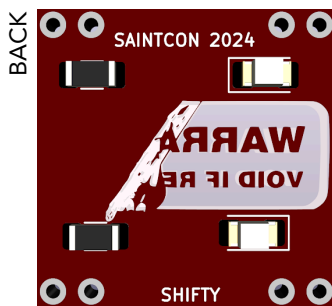
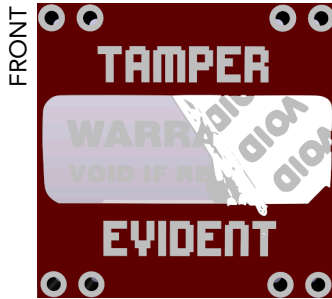
- Begin on the back side first.
- Solder the LED(s) first, using the single-pad method for hand soldering.
- Solder the Resistor(s) using the same single-pad method for hand soldering.
- Solder the 4x 2-Position headers.

BOARD/LED TYPE:



PARTS USED:

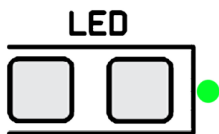
- 1206 LED
- 1206 RESISTOR
- FR4 PCB
- 2-Pin Pin Headers



ASSEMBLY INSTRUCTIONS:

- Begin on the back side first.
- Solder the LED(s) first, using the single-pad method for hand soldering.
- Solder the Resistor(s) using the same single-pad method for hand soldering.
- Solder the 4x 2-Position headers.

BOARD/LED TYPE:



COMMUNITY MINIBADGE

Tamper Evident Community Minibadge

Designed By: SHIFTY

If a container or object is "Tamper Evident" it is designed to make it obvious if someone has opened or modified it. Tamper evident seals, and devices we rely on are like any other security control, they have vulnerabilities.

The Tamper Evident community is all about bypassing these security devices without leaving any physical proof behind. This involves using heat, chemicals, brute force, and a keen eye for imperfections.

DIFFICULTY:

BEGINNER

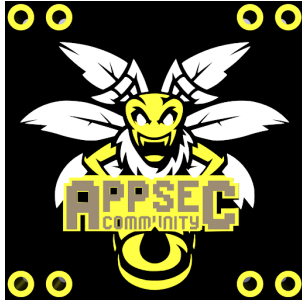
RARITY:

UNCOMMON

HOW DO I GET ONE?

Come visit our community.

FRONT



COMMUNITY MINIBADGE

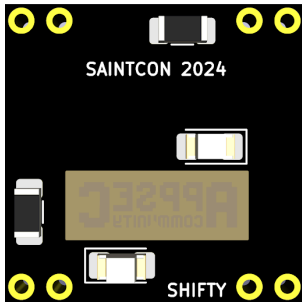
APPSEC Community Minibadge

Designed By: SHIFTY

The AppSec community is back with more tools, more content, and more challenges!

We will guide attendees in the finding and fixing vulnerabilities, through manual processes and use of SAST, DAST, and SCA tools. Sample vulnerable repositories will be provided for attendees to learn and practice the use of these tools.

BACK



DIFFICULTY:

BEGINNER

RARITY:

UNCOMMON

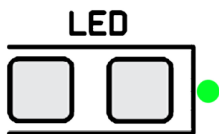
HOW DO I GET ONE?

Stop by our community to get one of these!
Make sure to jump in on the APPSEC
Challenge to get both of our minibadges.

ASSEMBLY INSTRUCTIONS:

- Begin on the back side first.
- Solder the LED(s) first, using the single-pad method for hand soldering.
- Solder the Resistor(s) using the same single-pad method for hand soldering.
- Solder the 4x 2-Position headers.

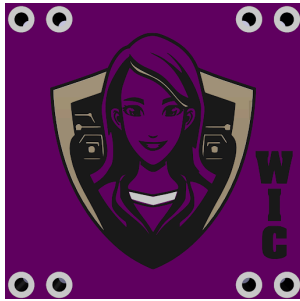
BOARD/LED TYPE:



PARTS USED:

- 1206 LED
- 1206 RESISTOR
- FR4 PCB
- 2-Pin Pin Headers

FRONT



COMMUNITY MINIBADGE

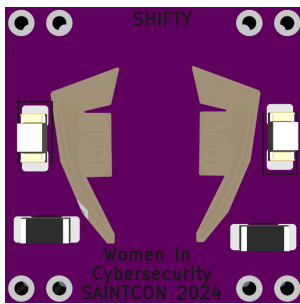
Women In Cybersecurity - Advocates

Designed By: SHIFTY

The WIC Advocates Community is geared towards providing:

Support and community for people of all genders in cybersecurity who recognize that gender inequality and issues exist within cybersecurity and want to support change.

BACK



DIFFICULTY:

BEGINNER

RARITY:

UNCOMMON

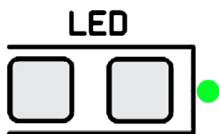
HOW DO I GET ONE?

Stop by, pick up a badge and get career advice from WIC Advocates within the industry for others looking to move up and for those who wish to get started. There will be resume reviews, 1:1 career advice with industry experts, headshots and more!

ASSEMBLY INSTRUCTIONS:

- Begin on the back side first.
- Solder the LED(s) first, using the single-pad method for hand soldering.
- Solder the Resistor(s) using the same single-pad method for hand soldering.
- Solder the 4x 2-Position headers.

BOARD/LED TYPE:



PARTS USED:

- 1206 LED
- 1206 RESISTOR
- FR4 PCB
- 2-Pin Pin Headers

FRONT



COMMUNITY MINIBADGE

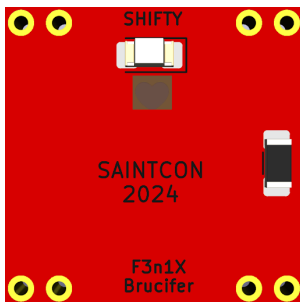
Healthcare Hacking Community Minibadge

Designed By: SHIFTY

Health Care devices need to be hacked too. Join us!

The Health Care Hacking Community is a location for conference attendees to gather to learn and share information on the state of health care cybersecurity and how it intersects with personal health.

BACK



DIFFICULTY:

BEGINNER

RARITY:

RARE

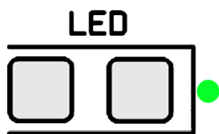
HOW DO I GET ONE?

Come visit our community and Hack various healthcare devices.

ASSEMBLY INSTRUCTIONS:

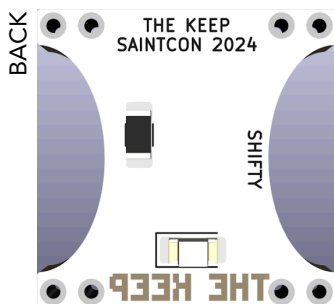
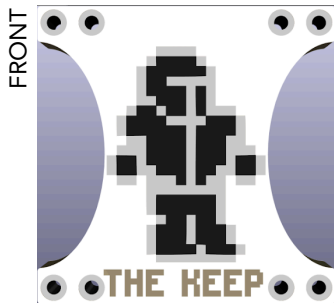
- Begin on the back side first.
- Solder the LED(s) first, using the single-pad method for hand soldering.
- Solder the Resistor(s) using the same single-pad method for hand soldering.
- Solder the 4x 2-Position headers.

BOARD/LED TYPE:



PARTS USED:

- 1206 LED
- 1206 RESISTOR
- FR4 PCB
- 2-Pin Pin Headers



COMMUNITY MINIBADGE

"THE KEEP" Community Minibadge

Designed By: SHIFTY

Your quest begins here! Hone your hacking skills and put them to the test. The Keep is a fun and educational environment where you can both learn the fundamentals of hacking and test your abilities in a realistic environment. Whether you are a beginner or an expert hacker, there are opportunities for you to learn new things and challenge yourself.

DIFFICULTY:

INTERMEDIATE

RARITY:

COMMON

HOW DO I GET ONE?

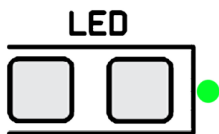
Bring a laptop, and come participate in "THE KEEP".

ASSEMBLY INSTRUCTIONS:

- Begin on the back side first.
- Solder the LED(s) first, using the single-pad method for hand soldering.
- Solder the Resistor(s) using the same single-pad method for hand soldering.
- Solder the Pin-headers.

Throughout your quest you may get pieces of armor or weapons that solder to the sides of your badge.

BOARD/LED TYPE:



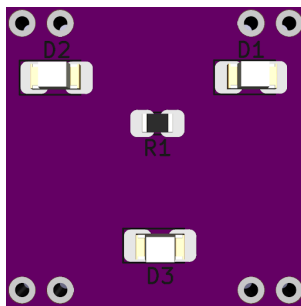
PARTS USED:

- 1206 LED
- 1206 RESISTOR
- FR4 PCB
- 2-Pin Pin Headers

FRONT



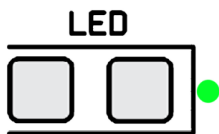
BACK



ASSEMBLY INSTRUCTIONS:

- 1206 LED
- 0805 RESISTOR
- FR4 PCB
- 2-Pin Pin Headers

BOARD/LED TYPE:



COMMUNITY MINIBADGE

ID/IOT Community Minibadge

Designed By: Spectre

Industrial Devices and IoT together make an interesting challenge you should explore. The IDIOTs are BACK!

Remember last year? When you heard about the fragility of control systems and the cyber security problems they face? Whether the threats are from vulnerable PLCs to protocols that lack authentication, or proprietary protocols where there is little to no documentation, these systems are becoming more and more notorious for their security vulnerabilities.

DIFFICULTY:

BEGINNER

RARITY:

RARE

HOW DO I GET ONE?

Come and participate in our community.

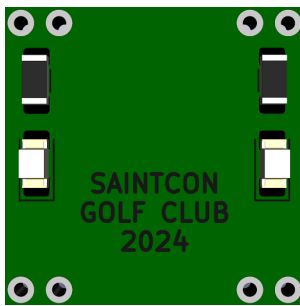
PARTS USED:

- 1206 LED
- 0805 RESISTOR
- FR4 PCB
- 2-Pin Pin Headers

FRONT



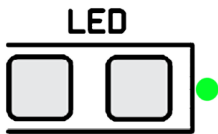
BACK



ASSEMBLY INSTRUCTIONS:

- Begin on the back side first.
- Solder the LED(s) first, using the single-pad method for hand soldering.
- Solder the Resistor(s) using the same single-pad method for hand soldering.
- Solder the 4x 2-Position headers.

BOARD/LED TYPE:



EVENT MINIBADGE

Saintcon Golf Club

Designed By: Jup1t3r

Come experience the ultimate mini-golf experience.

Where else will you be able to play mini-golf at a conference? Come play a round of mini-golf that weaves its way around the conference itself.

DIFFICULTY:

BEGINNER

RARITY:

RARE

HOW DO I GET ONE?

Everything you need to know...

- We will provide golf clubs and foam training balls.
- Do not bring your own golf balls and
- Keep it safe (No Happy Gilmore moves)
 - Meet at the lounge.

PARTS USED:

- 1206 LED
- 1206 RESISTOR
- FR4 PCB
- 2-Pin Pin Headers

FRONT



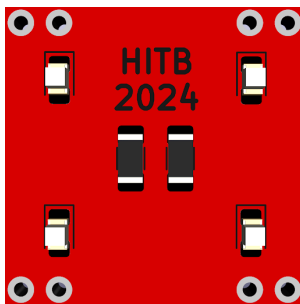
EVENT MINIBADGE

Hack in the Box Minibadge

Designed By: Jup1t3r

Evening hacker space, near the event venue, which opens after the main speaking tracks and conference have closed for the day. Offers some accommodations for soldering, presentations, networking, and contest collaboration.

BACK



DIFFICULTY:
BEGINNER

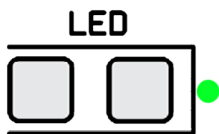
HOW DO I GET ONE?
Come hang out and claim a minibadge!

RARITY:
RARE

ASSEMBLY INSTRUCTIONS:

- Begin on the back side first.
- Solder the LED(s) first, using the single-pad method for hand soldering.
- Solder the Resistor(s) using the same single-pad method for hand soldering.
- Solder the 4x 2-Position headers.

BOARD/LED TYPE:



PARTS USED:

- 1206 LED
- 1206 RESISTOR
- FR4 PCB
- 2-Pin Pin Headers

FRONT



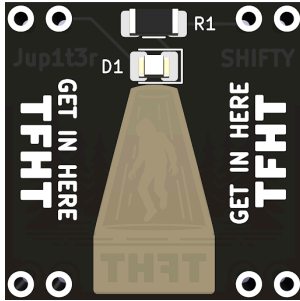
EVENT MINIBADGE

TFHT - Tin Foil Hat Talks Minibadge

Designed By: Jup1t3r

There is significant evidence that the TFHT Minibadge does exist, and the conspiracy is not a conspiracy, we have proof that with the Minibadge is actually a tracker and serves to augment all fields of mind control, making it the most dangerous element of this supposed "security conference".

BACK



DIFFICULTY:
BEGINNER

RARITY:
RARE

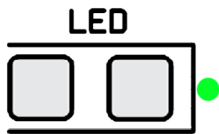
HOW DO I GET ONE?

There are reports the Klippy used this technology to gain control. Further information on this undisclosed event can be found.....54 68 65 20 74 72 75 74 68 20 69 73 20 6F 75 74 20 74 68 65 72 65 0A

ASSEMBLY INSTRUCTIONS:

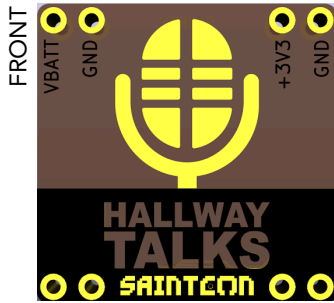
We're not certain this badge exists.

BOARD/LED TYPE:



PARTS USED:

Parts are not from here.

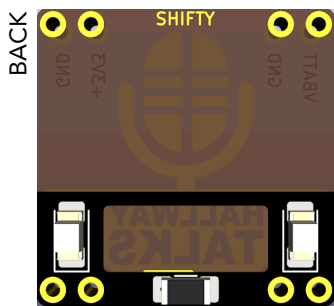


EVENT MINIBADGE

Hallway Talks Minibadge

Designed By: Jup1t3r

Hallway talks were started to give insight into all the incredible effort that makes SAINTCON a success for all involved. We post videos of interviews and behind the scenes content of all things Saintcon!



DIFFICULTY:
BEGINNER

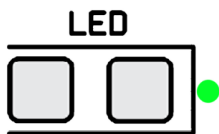
RARITY:
RARE

HOW DO I GET ONE?
Find us in the hallways, and ask us for one of these neat badges... Because... We want to talk!

ASSEMBLY INSTRUCTIONS:

- Begin on the back side first.
- Solder the LED(s) first, using the single-pad method for hand soldering.
- Solder the Resistor(s) using the same single-pad method for hand soldering.
- Solder the 4x 2-Position headers.

BOARD/LED TYPE:



PARTS USED:

- 1206 LED
- 1206 RESISTOR
- FR4 PCB
- 2-Pin Pin Headers

FRONT



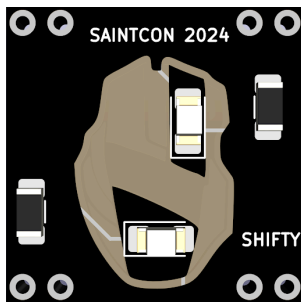
EVENT MINIBADGE

Lan Party Event Minibadge

Designed By: SHIFTY

We'll have a variety of games available, including StarCraft, Cursed Halo, Battlefield 1942, Minecraft, Overwatch 2, League of Legends, Rocket League, PayDay 2, and others. And if there's a particular game you'd like to play, let us know during the LAN Party and we'll make a way for us to vote on new games.

BACK



DIFFICULTY:
BEGINNER

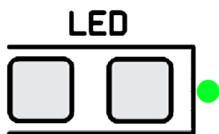
RARITY:
RARE

HOW DO I GET ONE?
Come get your LAN on, and experience this classic event.
LAN Party – Bring your rigs!

ASSEMBLY INSTRUCTIONS:

- Begin on the back side first.
- Solder the LED(s) first, using the single-pad method for hand soldering.
- Solder the Resistor(s) using the same single-pad method for hand soldering.
- Solder the 4x 2-Position headers.

BOARD/LED TYPE:



PARTS USED:

- 1206 LED
- 1206 RESISTOR
- FR4 PCB
- 2-Pin Pin Headers

FRONT



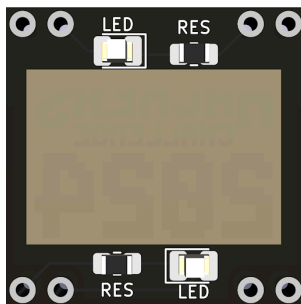
CONTEST MINIBADGE

Hackers Challenge Contest Minibadge

Designed By: Jup1t3r

Hackers Challenge is the premiere challenge of SAINTCON. The Hackers Challenge contest is an event held annually during the SAINTCON conference to challenge your skills as a security professional by presenting players with technology, logical, and security related puzzles and challenges.

BACK



DIFFICULTY:
INTERMEDIATE

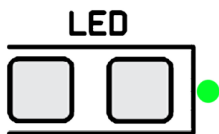
HOW DO I GET ONE?
Participate and gain one of these amazing Hackers Challenge 2024 Minibadges.

RARITY:
COMMON

ASSEMBLY INSTRUCTIONS:

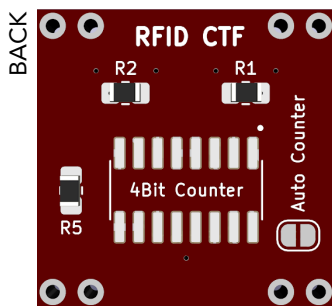
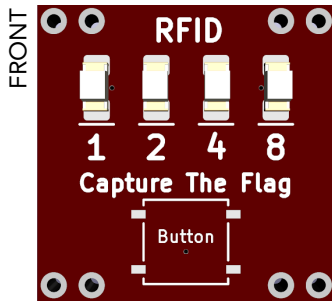
- Begin on the back side first.
- Solder the LED(s) first, using the single-pad method for hand soldering.
- Solder the Resistor(s) using the same single-pad method for hand soldering.
- Solder the 4x 2-Position headers.

BOARD/LED TYPE:



PARTS USED:

- 0805 LED
- 0805 RESISTOR
- FR4 PCB
- 2-Pin Pin Headers



CONTEST MINIBADGE

RFID CTF Minibadge

Designed By: Jup1t3r

Immediately start from nothing as you play through a CTF that steps you through challenges geared from a beginner with zero knowledge, to a more advanced user.

DIFFICULTY:
ADVANCED

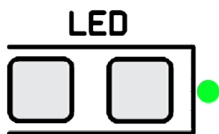
RARITY:
RARE

HOW DO I GET ONE?
Come and participate in our CTF and explore the exciting world of RFID.

ASSEMBLY INSTRUCTIONS:

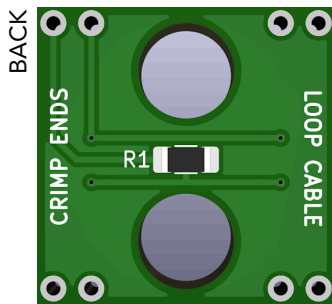
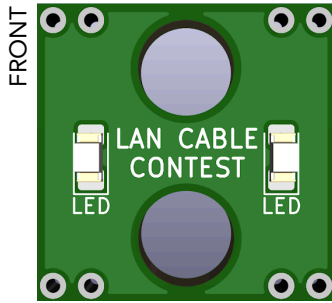
- Begin on the back side first.
 - Solder the LED(s) first, using the single-pad method for hand soldering.
 - Solder on the chip carefully using the drag method to minimize pin bridging.
 - Solder the Resistor(s) using the same single-pad method for hand soldering.
- Solder the button on the top.
- Solder the 4x 2-Position headers."

BOARD/LED TYPE:



PARTS USED:

- 1206 LED
- 1206 RESISTOR
- FR4 PCB
- 2-Pin Pin Headers
- Momentary Button
- 4Bit Counter



CONTEST MINIBADGE

Lan Cable Contest Minibadge

Designed By: Jup1t3r

Build a LAN Cable, as fast as you can!

Have you ever built your own network cable? Maybe you're a cable-making veteran and never want to crimp a network cable again... or maybe you've never even tried. Whatever you're inclination you can at least try it once! Get ready to unleash or learn mad network cable crimping skills and test your RJ-45 crimping prowess in the LAN cable contest!

DIFFICULTY:

ADVANCED

RARITY:

RARE

HOW DO I GET ONE?

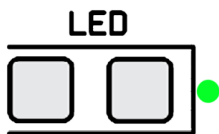
Give the lan cable contest a try.

ASSEMBLY INSTRUCTIONS:

- Solder the LED(s) first, using the single-pad method for hand soldering.
- Solder the Resistor(s) using the same single-pad method for hand soldering.
- Solder the 4x 2-Position headers.

Then hone your cable making skills by putting an end on a cable, looping it through the minibadge and then putting the other end on, making the shortest loop possible!

BOARD/LED TYPE:



PARTS USED:

- 1206 LED
- 1206 RESISTOR
- FR4 PCB
- 2-Pin Pin Headers

FRONT



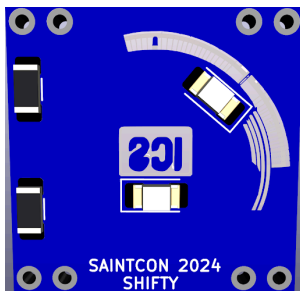
CONTEST MINIBADGE

ICS Escape Challenge (Escaped)

Designed By: SHFITY

New this year is the ICS (Industrial Control System) Challenge! Test your skills in this escape room style Contest.

BACK



DIFFICULTY:

BEGINNER

RARITY:

UNCOMMON

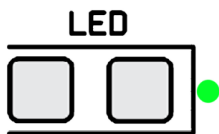
HOW DO I GET ONE?

Get one of the coveted ESCAPED Minibadges by escaping the room. Or get one of the FAILED badges, byFAILING!!!

ASSEMBLY INSTRUCTIONS:

- Begin on the back side first.
- Solder the LED(s) first, using the single-pad method for hand soldering.
- Solder the Resistor(s) using the same single-pad method for hand soldering.
- Solder the 4x 2-Position headers.

BOARD/LED TYPE:



PARTS USED:

- 1206 LED
- 1206 RESISTOR
- FR4 PCB
- 2-Pin Pin Headers

FRONT



BACK



CONTEST MINIBADGE

APPSEC Challenge Minibadge

Designed By: SHIFTY

Do you have what it takes to find and fix vulnerabilities in source code? Compete against other attendees to be the first to fix all vulnerabilities in a web application. Clone the repo, find vulnerabilities, fix them, and submit your code to get a score. Not sure how to get started? Visit the AppSec community and learn how to use tools that will do the dirty work of finding vulnerabilities for you.

DIFFICULTY:

BEGINNER

RARITY:

UNCOMMON

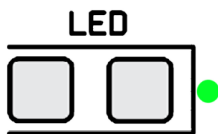
HOW DO I GET ONE?

Find and Fix vulnerabilities, it's our biggest challenge.

ASSEMBLY INSTRUCTIONS:

- Begin on the back side first.
- Solder the LED(s) first, using the single-pad method for hand soldering.
- Solder the Resistor(s) using the same single-pad method for hand soldering.
- Solder the 4x 2-Position headers.

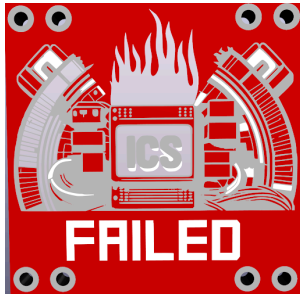
BOARD/LED TYPE:



PARTS USED:

- 1206 LED
- 1206 RESISTOR
- FR4 PCB
- 2-Pin Pin Headers

FRONT



CONTEST MINIBADGE

ICS Escape Challenge (Failed)

Designed By: SHIFTY

New this year is the ICS (Industrial Control System) Challenge! Test your skills in this escape room style Contest.

BACK



DIFFICULTY:

BEGINNER

RARITY:

UNCOMMON

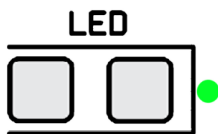
HOW DO I GET ONE?

Get one of the coveted ESCAPED Minibadges by escaping the room. Or get one of the FAILED badges, byFAILING!!!

ASSEMBLY INSTRUCTIONS:

- Begin on the back side first.
- Solder the LED(s) first, using the single-pad method for hand soldering.
- Solder the Resistor(s) using the same single-pad method for hand soldering.
- Solder the 4x 2-Position headers.

BOARD/LED TYPE:



PARTS USED:

- 1206 LED
- 1206 RESISTOR
- FR4 PCB
- 2-Pin Pin Headers

FRONT



CONTEST MINIBADGE

Vault Challenge Minibadge

Designed By: SHIFTY

Welcome to The Vault, the premier physical penetration test challenge at SAINTCON! If you have a knack for bypassing doors, picking locks and subverting security systems, then this is the ultimate challenge for you.

BACK



DIFFICULTY:

BEGINNER

HOW DO I GET ONE?

The Vault's open structure allows multiple teams of competitors to engage in the challenge simultaneously. Come and participate to get one of these.

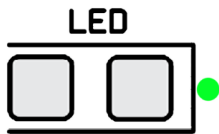
RARITY:

UNCOMMON

ASSEMBLY INSTRUCTIONS:

- Begin on the back side first.
- Solder the LED(s) first, using the single-pad method for hand soldering.
- Solder the Resistor(s) using the same single-pad method for hand soldering.
- Solder the 4x 2-Position headers.

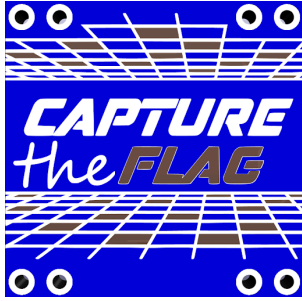
BOARD/LED TYPE:



PARTS USED:

- 1206 LED
- 1206 RESISTOR
- FR4 PCB
- 2-Pin Pin Headers

FRONT



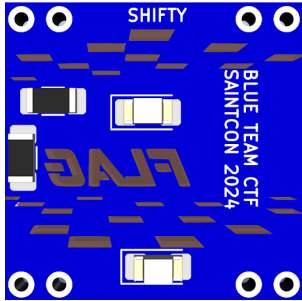
CONTEST MINIBADGE

CTF Blue Team Style Minibadge

Designed By: SHIFTY

Welcome to the Capture the Flag game designed to hone your skills on the blue team side of cybersecurity. This challenge is crafted to test your proficiency in areas such as digital forensics, network forensics, malware analysis, hashing/encryption, threat intelligence, OSINT, scripting, and more! Whether you're a seasoned cybersecurity professional or a curious beginner, this game promises to engage and challenge all participants.

BACK



DIFFICULTY:
BEGINNER

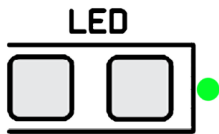
HOW DO I GET ONE?
Come and unravel the who, what, when, where, and why of a cyber-attack.

RARITY:
RARE

ASSEMBLY INSTRUCTIONS:

- Begin on the back side first.
- Solder the LED(s) first, using the single-pad method for hand soldering.
- Solder the Resistor(s) using the same single-pad method for hand soldering.
- Solder the 4x 2-Position headers.

BOARD/LED TYPE:



PARTS USED:

- 1206 LED
- 1206 RESISTOR
- FR4 PCB
- 2-Pin Pin Headers

FRONT



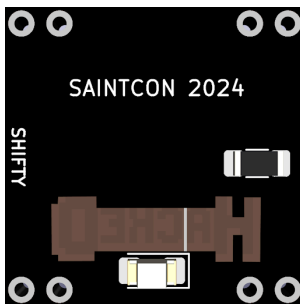
CONTEST MINIBADGE

So You've Been Hacked? Contest Minibadge

Designed By: SHIFTY

Welcome to So You've Been Hacked?, a SAINTCON's blue team contest. In this unique challenge, you will step into the shoes of a corporate security team facing a nightmare scenario: a critical alert indicating a critical developer's laptop has been compromised during routine development work. With the clock ticking and the pressure on, your mission is to navigate through the incident response process to halt the breach.

BACK



DIFFICULTY:
BEGINNER

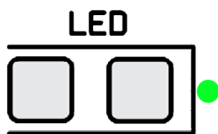
HOW DO I GET ONE?
Come and participate in this contest!

RARITY:
RARE

ASSEMBLY INSTRUCTIONS:

- Begin on the back side first.
- Solder the LED(s) first, using the single-pad method for hand soldering.
- Solder the Resistor(s) using the same single-pad method for hand soldering.
- Solder the 4x 2-Position headers.

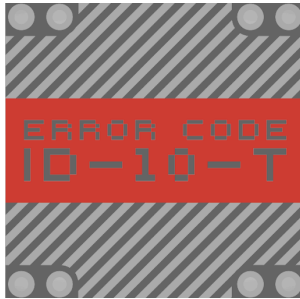
BOARD/LED TYPE:



PARTS USED:

- 1206 LED
- 1206 RESISTOR
- FR4 PCB
- 2-Pin Pin Headers

FRONT



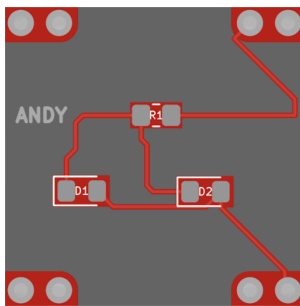
PERSONAL MINIBADGE

ID10T Error Minibadge

Designed By: Andy T Bandy

ID10T: What is it & How to Fix It... Well... You cant.

BACK



DIFFICULTY:

INTERMEDIATE

HOW DO I GET ONE?

Go find Andy and trade or barter for one of these.

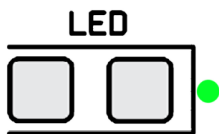
RARITY:

RARE

ASSEMBLY INSTRUCTIONS:

- Begin on the back side first.
- Solder the LED(s) first, using the single-pad method for hand soldering.
- Solder the Resistor(s) using the same single-pad method for hand soldering.
- Solder the Pin-headers.

BOARD/LED TYPE:



PARTS USED:

FRONT



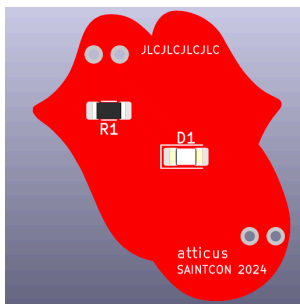
PERSONAL MINIBADGE

Rolling Stones

Designed By: atticus

This is the famous tongue logo for The Rolling Stones, now in mini badge form.

BACK



DIFFICULTY:

BEGINNER

HOW DO I GET ONE?

Trade with me.

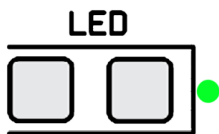
RARITY:

SUPER RARE

ASSEMBLY INSTRUCTIONS:

Solder the LEDs first, using the single-pad method for hand soldering. Solder the resistor using the single-pad method for hand soldering. Solder the Pin Headers to the Badge.

BOARD/LED TYPE:



PARTS USED:

- 1206 LED (1 red),
- 1206 RESISTOR (1 - 75 OHM),
- 2-Pin Pin Headers (2),
- FR-4 PCB Board (1)

FRONT



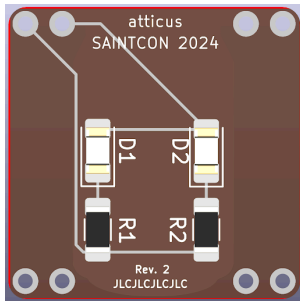
PERSONAL MINIBADGE

Coca-Cola

Designed By: atticus

Coca-Cola offers a unique and refreshing taste that perfectly balances sweetness and carbonation, making it an enjoyable drink for any occasion. Its rich history and iconic branding evoke a sense of nostalgia and tradition, connecting generations and creating lasting memories.

BACK



DIFFICULTY:

BEGINNER

HOW DO I GET ONE?

Trade with me.

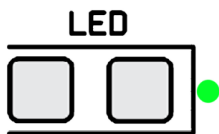
RARITY:

SUPER RARE

ASSEMBLY INSTRUCTIONS:

Solder the LEDs first, using the single-pad method for hand soldering. Solder the resistor using the single-pad method for hand soldering. Solder the Pin Headers to the Badge.

BOARD/LED TYPE:



PARTS USED:

- 1206 LED (2 White)
- 1206 RESISTOR (2 - 75 OHM)
- 2-Pin Pin Headers (4)
- FR-4 PCB Board (1)

FRONT



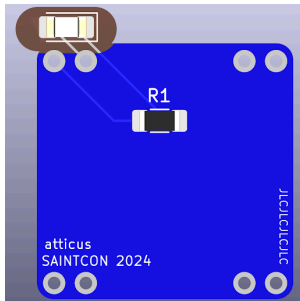
PERSONAL MINIBADGE

Discord

Designed By: atticus

Keeping up with Discord notifications can be challenging, here is a mini badge to remind you to look at the SAINTCON Discord.

BACK



DIFFICULTY:

BEGINNER

HOW DO I GET ONE?

Trade with me.

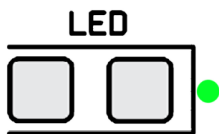
RARITY:

SUPER RARE

ASSEMBLY INSTRUCTIONS:

Solder the LEDs first, using the single-pad method for hand soldering. Solder the resistor using the single-pad method for hand soldering. Solder the Pin Headers to the Badge.

BOARD/LED TYPE:



PARTS USED:

- 1206 LED (1 red),
- 1206 RESISTOR (1 - 75 OHM),
- 2-Pin Pin Headers (4),
- FR-4 PCB Board (1)

FRONT



PERSONAL MINIBADGE

Shut up and take my money!

Designed By: atticus

Inspired by Futurama, shut up and take my money!

BACK



DIFFICULTY:

BEGINNER

HOW DO I GET ONE?

Trade with me.

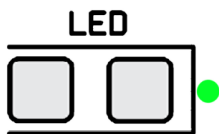
RARITY:

SUPER RARE

ASSEMBLY INSTRUCTIONS:

Solder the LEDs first, using the single-pad method for hand soldering. Solder the resistor using the single-pad method for hand soldering. Solder the Pin Headers to the Badge.

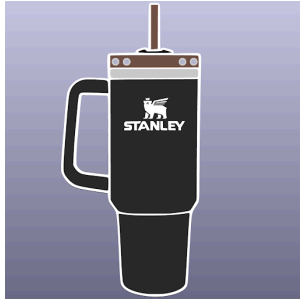
BOARD/LED TYPE:



PARTS USED:

- 1206 LED (1 green),
- 1206 RESISTOR (1 - 75 OHM),
- 2-Pin Pin Headers (2),
- FR-4 PCB Board (1)

FRONT



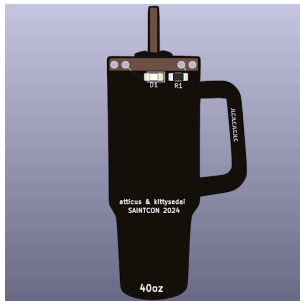
PERSONAL MINIBADGE

40oz Stanley Mug

Designed By: atticus & kittysedai

Everywhere you go, you carry this trusty companion that keeps your drinks ice-cold for hours or piping hot through the day. It's built like a tank, with a handle that makes it easy to grab and go. Whether you're on a hike, at the office, or just lounging at home, it's always by your side, ensuring you stay hydrated without any spills, thanks to its sturdy lid. The best part? It's got that classic, timeless look that turns heads and sparks conversations. This badge can be obtained in one of four colors, black or blue (get from atticus), white or purple (get from kittysedai).

BACK



DIFFICULTY:

BEGINNER

HOW DO I GET ONE?

Trade with us.

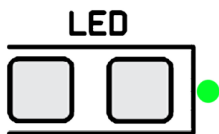
RARITY:

SUPER RARE

ASSEMBLY INSTRUCTIONS:

Solder the LEDs first, using the single-pad method for hand soldering. Solder the resistor using the single-pad method for hand soldering. Solder the Pin Headers to the Badge.

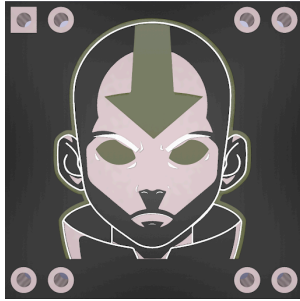
BOARD/LED TYPE:



PARTS USED:

- 1206 LED (1 white),
- 1206 RESISTOR (1 - 75 OHM),
- 2-Pin Pin Headers (2),
- FR-4 PCB Board (1 in either black, blue, white, or purple)

FRONT



PERSONAL MINIBADGE

Aang head

Designed By: bfcoder

I just think Avatar the last air bender is a great show. Wanted to do a neat glowing Aang head out of respect for the show.

BACK



DIFFICULTY:
INTERMEDIATE

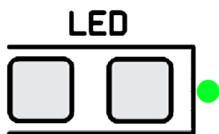
HOW DO I GET ONE?
Trade with me or ask for one.

RARITY:
UNCOMMON

ASSEMBLY INSTRUCTIONS:

Starting on the back, solder on the resistor in the top left. Next solder on the LED in the middle. The left side is negative. Flip it over and solder the header pins in place.

BOARD/LED TYPE:



PARTS USED:

FRONT

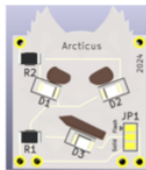


PERSONAL MINIBADGE

Arcticus

Designed By: Cyberm3n

BACK



DIFFICULTY:
BEGINNER

HOW DO I GET ONE?

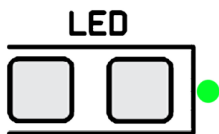
Trade with me
Just ask for one

RARITY:
RARE

ASSEMBLY INSTRUCTIONS:

- Solder 10 Ω resistor(s) to R1 & R2
- Solder Blue LED to D1 & D2
- Solder White LED to D3
- Solder Jumper to either Flash or Solid
- Cut header PIN(s) as needed
- Solder PIN(s) to board
- OPTIONAL Cover LEDs with Hot Glue as a diffuser

BOARD/LED TYPE:



PARTS USED:

- 1206 White LED
- 1206 Blue LED
- 1206 Resistor

FRONT

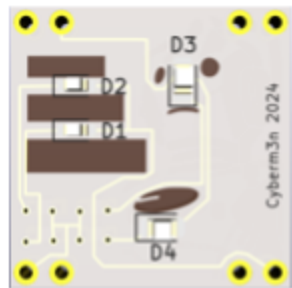


PERSONAL MINIBADGE

Cybermen

Designed By: Cyberm3n
Upgrade or you will be deleted

BACK



DIFFICULTY:
INTERMEDIATE

HOW DO I GET ONE?

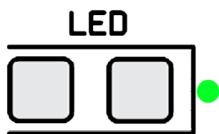
Trade with me
Just ask for one

RARITY:
RARE

ASSEMBLY INSTRUCTIONS:

- Solder 150 Ω resistors to the right-side column (The pads outlined / highlighted in RED)
- Solder 10 Ω resistors to the left-side column
- Solder Red LEDs to D1 & D2
- Solder Blue LED to D3
- Solder White LED to D4
- Cut header PIN(s) to size as needed
- Solder PIN(s) to board
- Solder Jumper to either Flash or Solid
- OPTIONAL Cover LEDs with Hot Glue as a diffuser

BOARD/LED TYPE:



PARTS USED:

- 0603 LEDs
- 0805 LEDs
- 0805 Resistor

FRONT

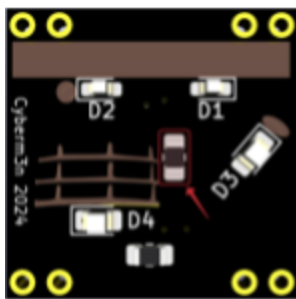


PERSONAL MINIBADGE

Dalek

Designed By: Cyberm3n
Exterminate Exterminate

BACK



DIFFICULTY:
INTERMEDIATE

HOW DO I GET ONE?

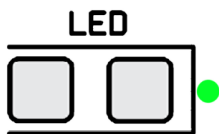
Trade with me
Just ask for one

RARITY:
RARE

ASSEMBLY INSTRUCTIONS:

- Solder 150 Ω resistor to the vertical resistor pad (Pad outlined / highlighted in RED)
- Solder 10 Ω resistor to the horizontal pad (Pad below D4)
- Solder Red LEDs to D1 & D2
- Solder Blue LED to D3

BOARD/LED TYPE:



PARTS USED:

- 0603 LEDs
- 0805 LEDs
- 0805 Resistor

FRONT



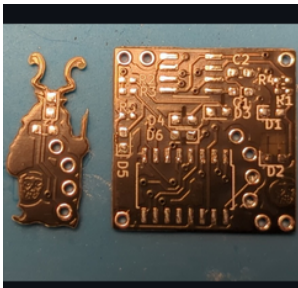
PERSONAL MINIBADGE

Krampus

Designed By: distinctm1nd

This badge has a hidden message, see if you can find it!

BACK



DIFFICULTY:

ADVANCED

HOW DO I GET ONE?

Contact me on discord or find me at the conference

RARITY:

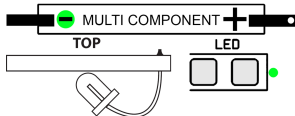
SUPER RARE

ASSEMBLY INSTRUCTIONS:

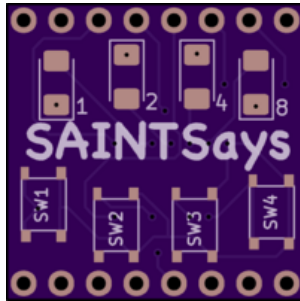
The instructions for this are here: https://github.com/distinctm1nd/krampus_minibadge_2023

BOARD/LED TYPE:

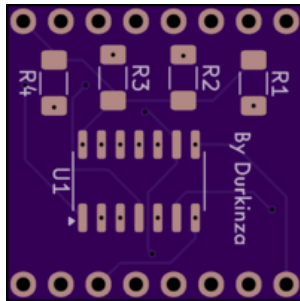
PARTS USED:



FRONT



BACK



PERSONAL MINIBADGE

SAINTSays

Designed By: Durkinza

The badge has a pattern matching game and will display your high score as you walk around so all can see your awesome stack trace memorizing skills.

DIFFICULTY:

ADVANCED

RARITY:

SUPER RARE

HOW DO I GET ONE?

Find Durkinza around the conference and offer to trade for it.

ASSEMBLY INSTRUCTIONS:

I wanted to learn how to make a badge, and I liked the idea of making the badge functional like a game.

There are 4 1206 LEDs of varying colors and 4 1206 resistors.

The value of the resistors depends on how bright you want each color.

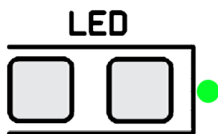
The chip on the back is an ATTINY84a.

The making of: <https://zanedurk.in/saintsays-mini-badge/>

Soldering steps: <https://zanedurk.in/soldering-the-saintsays-mini-badge/>

Code/KiCad files: <https://github.com/durkinza/SaintSays-MiniBadge>

BOARD/LED TYPE:



PARTS USED:

ATTINY84a

LED Blue

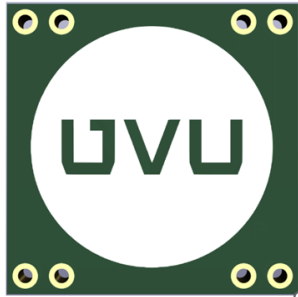
LED Yellow:

LED Red

LED Green

Buttons:

FRONT



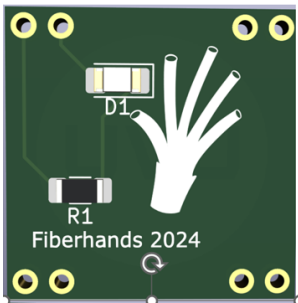
PERSONAL MINIBADGE

UVU 1 of 3

Designed By: FiberHands

Very simple design with one LED and one Resistor

BACK



DIFFICULTY:
BEGINNER

HOW DO I GET ONE?
Talk to a UVU employee.

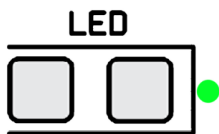
RARITY:
UNCOMMON

ASSEMBLY INSTRUCTIONS:

Solder on the surface mount LED, Resistor and pins and that's it.

BOARD/LED TYPE:

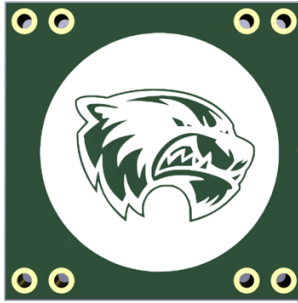
PARTS USED:



PART OF SET:

UVU:
Badge 1 of 3

FRONT

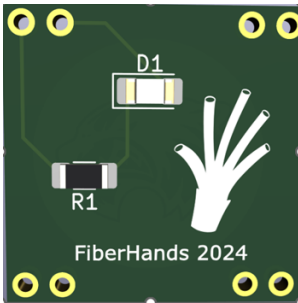


PERSONAL MINIBADGE

UVU 2 of 3

Designed By: Fiberhands
designed by a UVU employee. Just for fun

BACK



DIFFICULTY:
BEGINNER

HOW DO I GET ONE?
Talk to a UVU employee

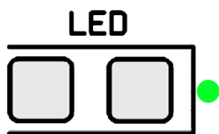
RARITY:
UNCOMMON

ASSEMBLY INSTRUCTIONS:

Solder on the surface mount LED and resistor and the pins.

BOARD/LED TYPE:

PARTS USED:



PART OF SET:

UVU:
Badge 2 of 3

FRONT

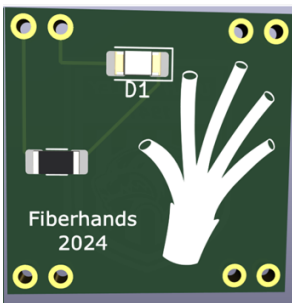


PERSONAL MINIBADGE

UVU 3 of 3

Designed By: Fiberhands
Designed by a UVU employee. Just for fun

BACK



DIFFICULTY:
BEGINNER

HOW DO I GET ONE?
Talk to a UVU employee

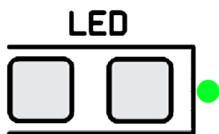
RARITY:
UNCOMMON

ASSEMBLY INSTRUCTIONS:

solder on the surface mount LED, resistor and pins,.

BOARD/LED TYPE:

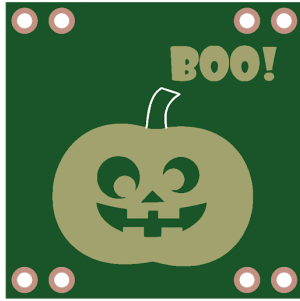
PARTS USED:



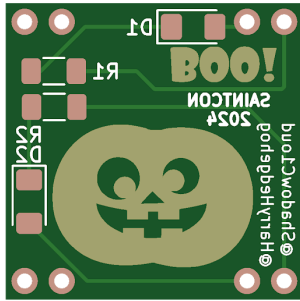
PART OF SET:

UVU:
Badge 3 of 3

FRONT



BACK



PERSONAL MINIBADGE

Pumpkin Badge

Designed By: HarryHedgehog & ShadowC1oud

Fun Pumpkin Badge designed by first time minibadge creator Harry Hedgehog. HH loved his first SAINTCON Family night last year and wanted a minibadge to trade with others this year.

DIFFICULTY:

BEGINNER

RARITY:

SUPER RARE

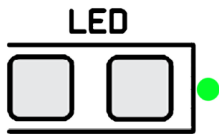
HOW DO I GET ONE?

Trade with me at family night, any extras will be traded for on HH's behalf at the conference following family night.

ASSEMBLY INSTRUCTIONS:

- Begin on the back side first.
- Solder the LEDs first, using the single-pad method for hand soldering.
- Solder the resistor using the single-pad method for hand soldering.
- Solder the 4x 2-Position headers.

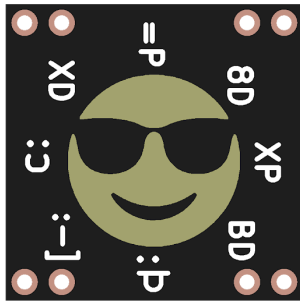
BOARD/LED TYPE:



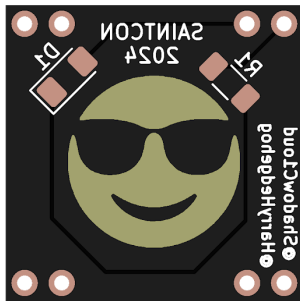
PARTS USED:

Designed for
 2 x 1206 3v Orange LEDs
 (<https://www.aliexpress.us/item/2251832152852349.html>)
 2 x 1206 100ohm Resistors
 (<https://www.aliexpress.us/item/3256805933290218.html>)

FRONT



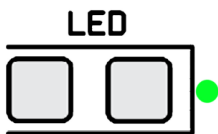
BACK



ASSEMBLY INSTRUCTIONS:

- Begin on the back side first.
- Solder the LED first, using the single-pad method for hand soldering.
- Solder the resistor using the single-pad method for hand soldering.
- Solder the 4x 2-Position headers.

BOARD/LED TYPE:



PERSONAL MINIBADGE

Smile Emoji

Designed By: HarryHedgehog & ShadowC1oud

Another design by HarryHedgehog. The smiley faces are meant to bring joy!

DIFFICULTY:

BEGINNER

RARITY:

SUPER RARE

HOW DO I GET ONE?

Trade with me on Family Night or with my dad (ShadowC1oud) at the conference after family night

PARTS USED:

1x LED 3v Warm White

(<https://www.aliexpress.us/item/2251832152852349.html?>)

1x 100ohm Resistor (<https://www.aliexpress.us/item/3256805933290218.html>)

FRONT



PERSONAL MINIBADGE

Ghosts Badge

Designed By: HeiHei & ShadowC1oud

First ever badge designed by HeiHei. She loves Ghosts, Halloween, Rainbows and SAINTCON! (Marked as intermediate only because the LED size is a little smaller than the 1206 size the board was made for. It should still solder fine though)

BACK



DIFFICULTY:

INTERMEDIATE

HOW DO I GET ONE?

Trade with me at Family night or with my dad at the conference after family night.

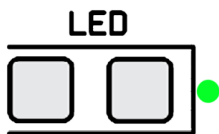
RARITY:

SUPER RARE

ASSEMBLY INSTRUCTIONS:

- Begin on the back side first.
- Solder the LED first, using the single-pad method for hand soldering. LED is 0807 while board was designed for 1206, so it is a little smaller than expected but shouldn't cause too much issue when soldering. (Reason for intermediate rating)
- Solder the resistor using the single-pad method for hand soldering.
- Solder the 4x 2-Position headers.

BOARD/LED TYPE:



PARTS USED:

- 1x 0807 RGB LED (Slow Flash)
(<https://www.aliexpress.us/item/3256804670052779.html>)
- 1x 1206 100ohm resistor
(<https://www.aliexpress.us/item/3256805933290218.html>)

FRONT



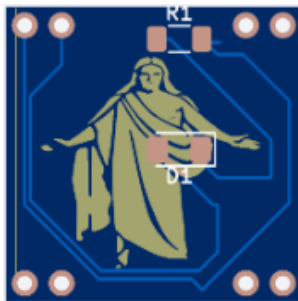
PERSONAL MINIBADGE

Gospel Library

Designed By: Hollyhacker

This minibadge was designed as a reminder of a daily tool used in my life . It is based on a personal faith belief of the importance of Jesus Christ in my life. It is meant to share an important part of who I am as a designer and person.

BACK



DIFFICULTY:

BEGINNER

RARITY:

SUPER RARE

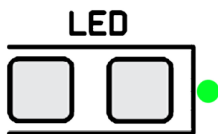
HOW DO I GET ONE?

I did not design this badge for general trading I have a very limited quantity. I have lots of other badges for general trading and sharing. You will need to explicitly ask me for this badge. Share a story, thought inspiration, moment, etc. on why it might be special to you.

ASSEMBLY INSTRUCTIONS:

Basic SMD Pad Soldering Method

BOARD/LED TYPE:



PARTS USED:

1206 100R Resistor

White 1206 SMD LED

(I did a few of thees in yellow as well and found they look nice)

FRONT



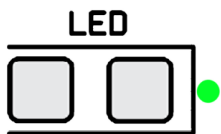
BACK



ASSEMBLY INSTRUCTIONS:

Standard SMD.

BOARD/LED TYPE:



PERSONAL MINIBADGE

Pineapple Minibadge

Designed By: Hollyhacker/SHIFTY

Inspired by the idea of a Wi-Fi Pineapple and mapping out networks. (No actual wireless radios included)

DIFFICULTY:
BEGINNER

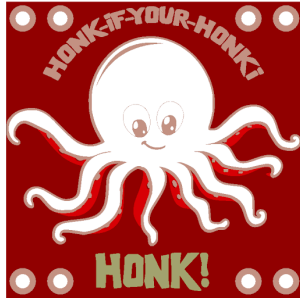
HOW DO I GET ONE?
Trade or Ask Hollyhacker

RARITY:
RARE

PARTS USED:

1206 100R Resistors
0805 RGB Flash (also fits 1206 if your careful)

FRONT



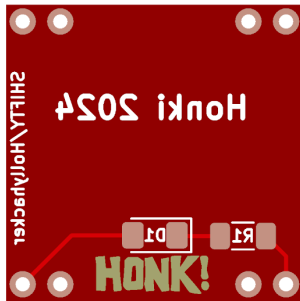
PERSONAL MINIBADGE

HONK-IF-YOUR-HONKI

Designed By: Honki/SHIFTY/Hollyhacker

Without Honki Saintcon wouldn't happen. In a tribute to her amazing laugh and her amazing ability to do 8 things at once Shifty/Hollyhacker have made this minibadge in tribute of her endless service to all of saintcon and its attendees

BACK



DIFFICULTY:
BEGINNER

RARITY:
RARE

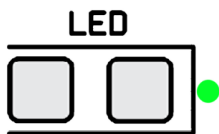
HOW DO I GET ONE?

Find Honki! She is often around registration areas but if you listen closely you can hear laugh to guide you to meeting the amazing Honki!

ASSEMBLY INSTRUCTIONS:

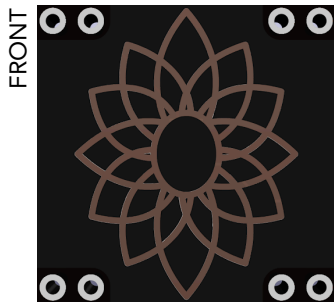
Standard SMD pad style soldering.

BOARD/LED TYPE:



PARTS USED:

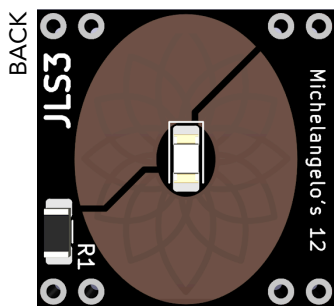
- 1206 100R Resistor
- 1206 Green SMD LED



PERSONAL MINIBADGE

Michelangelos's 12

Designed By: Jim Stewart
Michelangelos's 12 Personal Minibadge



DIFFICULTY:
BEGINNER

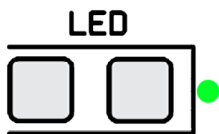
RARITY:
RARE

HOW DO I GET ONE?
Go find JLS3 and trade or barter for one of these!

ASSEMBLY INSTRUCTIONS:

- Begin on the back side first.
- Solder the LED(s) first, using the single-pad method for hand soldering.
- Solder the Resistor(s) using the same single-pad method for hand soldering.
- Solder the 4x 2-Position headers.

BOARD/LED TYPE:



PARTS USED:

1206 LED
1206 RESISTOR
FR4 PCB
2-Pin Pin Headers

FRONT



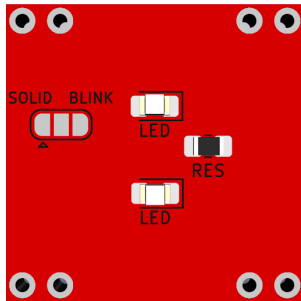
PERSONAL MINIBADGE

Supertechguy Personal Badge

Designed By: Jup1t3r

Do you know supertech guy? Do you want to? Of course you do!

BACK



DIFFICULTY:

INTERMEDIATE

HOW DO I GET ONE?

Trade him something cool for one of these badges!

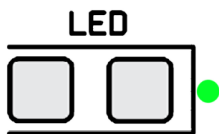
RARITY:

RARE

ASSEMBLY INSTRUCTIONS:

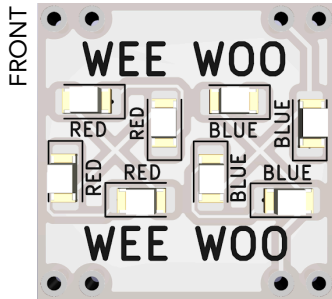
- Begin on the back side first.
- Solder the LED(s) first, using the single-pad method for hand soldering.
- Solder the Resistor(s) using the same single-pad method for hand soldering.
- Solder the jumper. (Pads at the bottom.) Either both of the right pads to make the badge blink or solder both of the left pads together to have the LED stay solid on.
- Solder the 4x 2-Position headers.

BOARD/LED TYPE:



PARTS USED:

- 0805 LED
- 0805 RESISTOR
- FR4 PCB
- 2-Pin Pin Headers

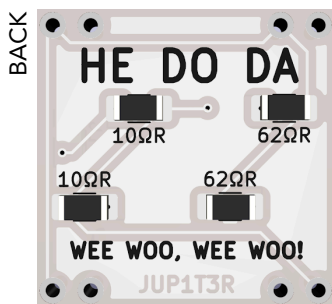


PERSONAL MINIBADGE

Wee Woo

Designed By: Jup1t3r

Wee woo wee woo he do da - Homage to the Police.... and ALOT of tik-tok memes.



DIFFICULTY:
INTERMEDIATE

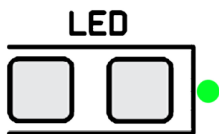
HOW DO I GET ONE?
Go and find Jup1t3r in the Minibadge trading space!

RARITY:
RARE

ASSEMBLY INSTRUCTIONS:

- Begin on the back side first.
- Solder the LED(s) first, using the single-pad method for hand soldering.
- Solder the Resistor(s) using the same single-pad method for hand soldering.
- Solder the 4x 2-Position headers.

BOARD/LED TYPE:



PARTS USED:

- SMD LED(s)
- SMD Resistor(s)

FRONT



PERSONAL MINIBADGE

STAR WARS VADER Minibadge

Designed By: Jup1t3r

The 1st LED filament minibadge to hit Saintcon is the VADER badge. This badge first made its appearance in 2022, and is back by popular demand.

BACK



DIFFICULTY:
INTERMEDIATE

RARITY:
UNCOMMON

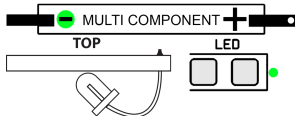
HOW DO I GET ONE?
Go and find Jup1t3r at the official Minibadge trading space.

ASSEMBLY INSTRUCTIONS:

Scan the QR code below to watch the offial assembly video.

BOARD/LED TYPE:

PARTS USED:



Scan For
Assembly
Instructions:



FRONT



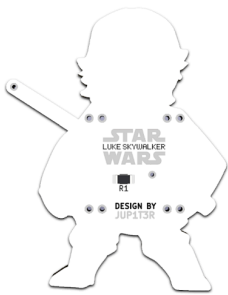
PERSONAL MINIBADGE

STAR WARS SKYWALKER Minibadge

Designed By: Jup1t3r

The SKYWALKER Minibadge will be super-rare. They are intended for Jup1t3r to give to people who have made significant contributions to the conference. So if you see someone wearing this one around, you can safely thank them for working Hard to make SAINTCON a success.

BACK



DIFFICULTY:

ADVANCED

HOW DO I GET ONE?

These are not for general circulation. Only available while supplies last.

RARITY:

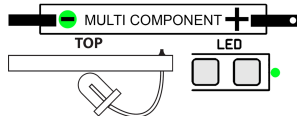
SUPER RARE

ASSEMBLY INSTRUCTIONS:

This is similar to the VADER badge in assembly. Scan the QR code on the VADER badge for general instructions.

BOARD/LED TYPE:

PARTS USED:



FRONT



PERSONAL MINIBADGE

Hyatt Place Provo Minibadge

Designed By: Jup1t3r

Special thanks to the Hyatt Place Provo for hosting us again this year.

BACK



DIFFICULTY:
BEGINNER

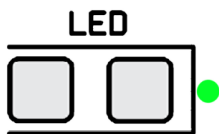
HOW DO I GET ONE?
Available only to those that are staying there.

RARITY:
UNCOMMON

ASSEMBLY INSTRUCTIONS:

- Begin on the back side first.
- Solder the LED(s) first, using the single-pad method for hand soldering.
- Solder the Resistor(s) using the same single-pad method for hand soldering.
- Solder the 4x 2-Position headers.

BOARD/LED TYPE:



PARTS USED:

- 1206 LED
- 1206 RESISTOR
- FR4 PCB
- 2-Pin Pin Headers

FRONT



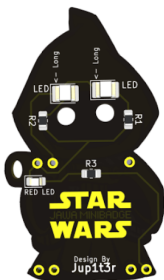
PERSONAL MINIBADGE

STAR WARS Jawa Minibadge

Designed By: Jup1t3r

A continuation of the Star War Series of badges.

BACK



DIFFICULTY:

INTERMEDIATE

HOW DO I GET ONE?

Go find Jup1t3r at the Minibadge Trading space to get one of these!

RARITY:

UNCOMMON

ASSEMBLY INSTRUCTIONS:

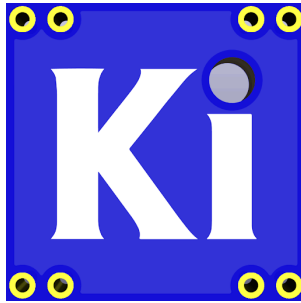
- Begin on the back side first.
- Solder the LED(s) first, using the single-pad method for hand soldering.
- You will need to carefully bend the THT LED's at a 90 Degree angle, push then through the holes and trim them a bit before soldering to the pads.
- Solder the Resistor(s) using the same single-pad method for hand soldering.
- Solder the Pin-headers.

BOARD/LED TYPE:

PARTS USED:



FRONT



PERSONAL MINIBADGE

Kicad Enthusiast

Designed By: Jup1t3r

Do you love Kicad as much as we do? A tribute to the free open source we use to make the many great Minibadges for the con.

BACK



DIFFICULTY:
BEGINNER

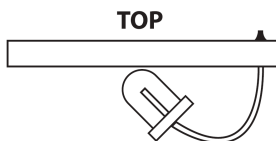
HOW DO I GET ONE?
Go find Jup1t3r at the Minibadge trading space.

RARITY:
UNCOMMON

ASSEMBLY INSTRUCTIONS:

- Begin on the back side first.
- Solder the LED(s) first, using the single-pad method for hand soldering.
- You will need to bend the THT led at a 90 Degree angle, poke through the hole and trim the leads before soldering to the pads.
- Solder the Resistor(s) using the same single-pad method for hand soldering.
- Solder the 4x 2-Position headers.

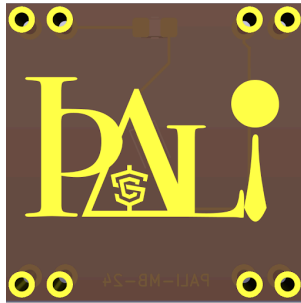
BOARD/LED TYPE:



PARTS USED:

- THT Led
- SMD Resistor

FRONT



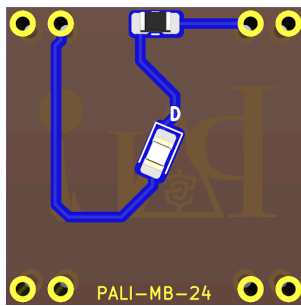
PERSONAL MINIBADGE

Pali Minibadge

Designed By: Jup1t3r

You know me as the "Guy that runs the Saintcon Store."

BACK



DIFFICULTY:
BEGINNER

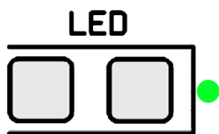
RARITY:
RARE

HOW DO I GET ONE?
Come find me and trade for one of these!

ASSEMBLY INSTRUCTIONS:

- Begin on the back side first.
- Solder the LED(s) first, using the single-pad method for hand soldering.
- Solder the Resistor(s) using the same single-pad method for hand soldering.
- Solder the 4x 2-Position headers.

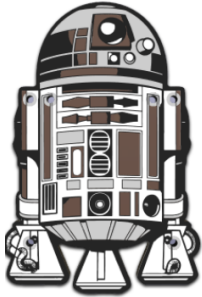
BOARD/LED TYPE:



PARTS USED:

- SMD Led
- SMD Resistor

FRONT



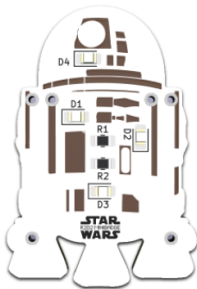
PERSONAL MINIBADGE

STAR WARS R2D2 Minibadge

Designed By: Jup1t3r/Berly

R2-D2 is courageous, comic, and a skilled technician. He communicates with beeps, chirps, squeals, and head spins.

BACK



DIFFICULTY:

INTERMEDIATE

RARITY:

UNCOMMON

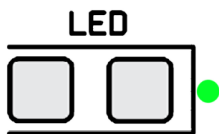
HOW DO I GET ONE?

As one of the coolest Minibadge Designs of this years con, these will go fast! Go find Berly to claim yours.

ASSEMBLY INSTRUCTIONS:

- Begin on the back side first.
- Solder the LED(s) first, using the single-pad method for hand soldering.
- Solder the Resistor(s) using the same single-pad method for hand soldering.
- Solder the Pin-headers.

BOARD/LED TYPE:



PARTS USED:

- 0805 LED
- 0805 RESISTOR
- FR4 PCB
- 2-Pin Pin Headers

FRONT



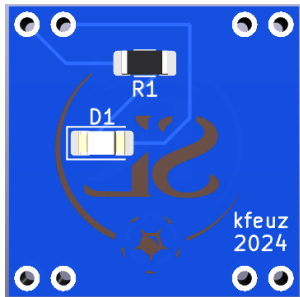
PERSONAL MINIBADGE

Real Salt Lake logo

Designed By: kfeuz

I'm an RSL fan so I wanted to create a minibadge to reflect that.

BACK



DIFFICULTY:
BEGINNER

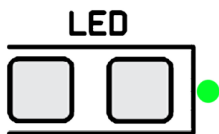
HOW DO I GET ONE?
Trade or come talk with me about RSL.

RARITY:
RARE

ASSEMBLY INSTRUCTIONS:

Solder the led at the location labeled D1. Solder the resistor at the location labeled R1. Solder the header pins. Done!

BOARD/LED TYPE:



PARTS USED:

- 1 Red 1206 LED
- 1 10-100 ohm 1206 Resistor

FRONT



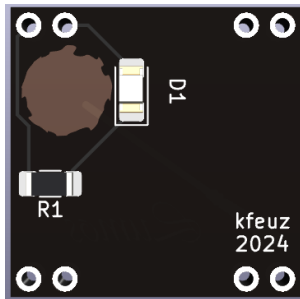
PERSONAL MINIBADGE

Harry Potter Lumos

Designed By: kfeuz

I'm a Harry Potter fan and wanted to design a minibadge to reflect that.

BACK



DIFFICULTY:
BEGINNER

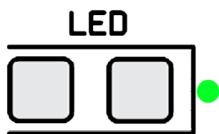
HOW DO I GET ONE?
Trade or come talk to me about Harry Potter.

RARITY:
RARE

ASSEMBLY INSTRUCTIONS:

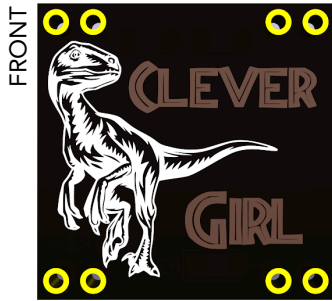
Solder the led at the location labeled D1. Solder the resistor at the location labeled R1. Solder the header pins. Done!

BOARD/LED TYPE:



PARTS USED:

- 1 White 1206 LED
- 1 10-100 ohm 1206 resistor

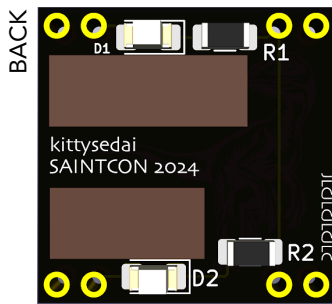


PERSONAL MINIBADGE

Clever Girl

Designed By: kittysedai

Inspired by the original Jurassic Park, Muldoon's last words before he gets attacked by a Velociraptor.



DIFFICULTY:

BEGINNER

HOW DO I GET ONE?

Trade with me

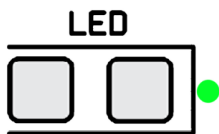
RARITY:

SUPER RARE

ASSEMBLY INSTRUCTIONS:

Solder the LEDs first, using the single-pad method for hand soldering. Solder the resistor using the single-pad method for hand soldering. Solder the Pin Headers to the Badge. Red LED goes on top, orange LED on bottom.

BOARD/LED TYPE:



PARTS USED:

1206 LED (1 red, 1 orange),
 1206 RESISTOR (2 - 75 OHM),
 2-Pin Pin Headers (4),
 FR-4 PCB Board (1)

FRONT



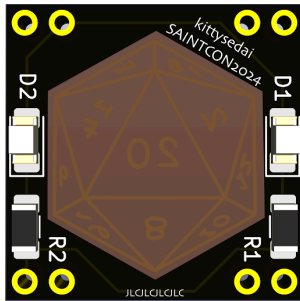
PERSONAL MINIBADGE

D20

Designed By: kittysedai

D20 dice for all you Dungeons and Dragons (D&D) or Dungeon Crawl Classic (DCC) Role Playing Game (RPG) lovers.

BACK



DIFFICULTY:

BEGINNER

HOW DO I GET ONE?

Trade with me.

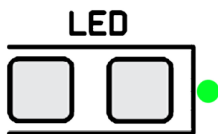
RARITY:

SUPER RARE

ASSEMBLY INSTRUCTIONS:

Solder the LEDs first, using the single-pad method for hand soldering. Solder the resistor using the single-pad method for hand soldering. Solder the Pin Headers to the Badge.

BOARD/LED TYPE:



PARTS USED:

- 1206 LED (2 white),
- 1206 RESISTOR (2 - 75 OHM),
- 2-Pin Pin Headers (4),
- FR-4 PCB Board (1)

FRONT



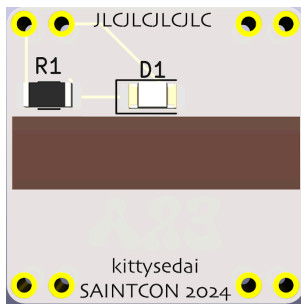
PERSONAL MINIBADGE

Hacker Era

Designed By: kittysedai

"In my era" is a slang phrase that refers to a period of time in a persons life that is notable for something distinctive. This badge was inspired by Taylor Swifts "In my Swiftie Era". This badge can be found in both white or black.

BACK



DIFFICULTY:

BEGINNER

HOW DO I GET ONE?

Trade with me.

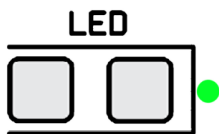
RARITY:

SUPER RARE

ASSEMBLY INSTRUCTIONS:

Solder the LEDs first, using the single-pad method for hand soldering. Solder the resistor using the single-pad method for hand soldering. Solder the Pin Headers to the Badge.

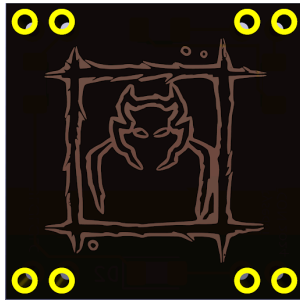
BOARD/LED TYPE:



PARTS USED:

- 1206 LED (1 pink or 1 red),
- 1206 RESISTOR (1- 75 OHM),
- 2-Pin Pin Headers (4),
- FR-4 PCB Board (1 white or 1 black)

FRONT



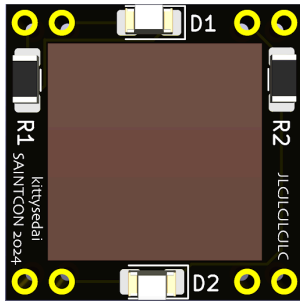
PERSONAL MINIBADGE

Hold Monster

Designed By: kittysedai

Inspired by Baldur's Gate 3. Hold monster is a level 5 enchantment spell. This spell allows spell casters to paralyze a creature, preventing them from acting and making them vulnerable to attacks. Cost: Action + Level 5 spell slot. Range: 18m / 60 ft. Requires concentration.

BACK



DIFFICULTY:
BEGINNER

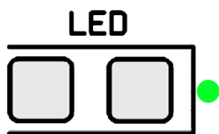
HOW DO I GET ONE?
Trade with me.

RARITY:
SUPER RARE

ASSEMBLY INSTRUCTIONS:

Solder the LEDs first, using the single-pad method for hand soldering. Solder the resistor using the single-pad method for hand soldering. Solder the Pin Headers to the Badge.

BOARD/LED TYPE:



PARTS USED:

- 1206 LED (2 red),
- 1206 RESISTOR (2 - 75 OHM),
- 2-Pin Pin Headers (4),
- FR-4 PCB Board (1)

FRONT



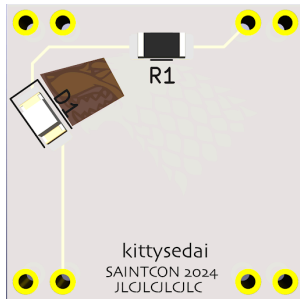
PERSONAL MINIBADGE

Winter Is Coming

Designed By: kittysedai

Inspired by Game of Thrones, House Stark motto. This badge can be found in white or black.

BACK



DIFFICULTY:

BEGINNER

HOW DO I GET ONE?

Trade with me.

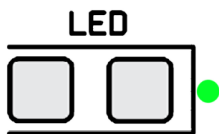
RARITY:

SUPER RARE

ASSEMBLY INSTRUCTIONS:

Solder the LEDs first, using the single-pad method for hand soldering. Solder the resistor using the single-pad method for hand soldering. Solder the Pin Headers to the Badge.

BOARD/LED TYPE:



PARTS USED:

- 1206 LED (1 white),
- 1206 RESISTOR (1 - 75 OHM),
- 2-Pin Pin Headers (4),
- FR-4 PCB Board (1 black or 1 white)

FRONT



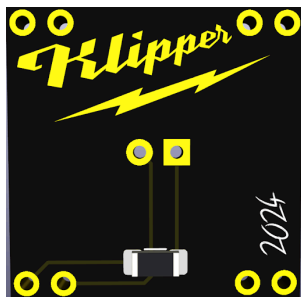
PERSONAL MINIBADGE

Team Red Minibadge

Designed By: klipper

A love letter to the greatest tool storage solution on the face of the earth. I thought it'd be fun to incorporate some multi-color 3D printing with my badge art this year. If you have a moment, I'd love to talk to you about tool storage :D

BACK



DIFFICULTY:

BEGINNER

RARITY:

UNCOMMON

HOW DO I GET ONE?

Come find me and trade me, or ask for one, or do an interpretive dance, tell me you like my hat, bring me a Sugar Free Redbull, share with me your favorite red tool and why.

ASSEMBLY INSTRUCTIONS:

- Solder the resistor on the back (only one spot for it to go, polarity doesn't matter)
- Place the glue dot on the bottom of the mini pack-out.
- Push the through hole led through the packout and the glue dot.
- Stick the packout assembly to the minibadge
- Solder the LED
- Solder the pins on
- Glue the packout lid on

BOARD/LED TYPE:

PARTS USED:



FRONT



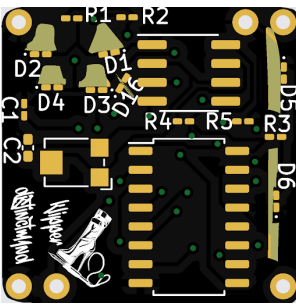
PERSONAL MINIBADGE

Cry Some More

Designed By: klipper & distinctm1nd

It has been said that certain MiniBadges are difficult to assemble. With that in mind, we offer, "Cry Some More". An artistic representation of the cries of sorrow about the difficulty of assembling MiniBadges falling on deaf ears.

BACK



DIFFICULTY:

BEGINNER

RARITY:

SUPER RARE

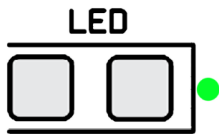
HOW DO I GET ONE?

Come find me and trade me, or ask for one, or do an interpretive dance, tell me you like my hat, bring me a Sugar Free Redbull, honestly...after seeing it you probably don't want one

ASSEMBLY INSTRUCTIONS:

Let's be honest, some text instructions likely aren't going to help you...if only there was a clue on the badge...

BOARD/LED TYPE:



PARTS USED:

0.1uF Capacitor (0201) | 22uF Capacitor (0402)
6- smd amber LEDs (0201) | 10- smd red LEDs (0201)
4- 68 ohm resistors (0201) | 5.1k ohm resistor (0201)
TLC555 timer, CD4017 decade counter
10k ohm potentiometer | 3- 2-pin male 2.54 headers

FRONT



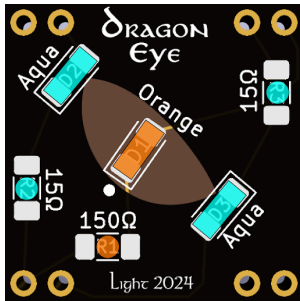
PERSONAL MINIBADGE

Dragon Eye

Designed By: Light

Dragons were ancient, intelligent, and powerful creatures, both feared and admired throughout Middle-earth. They were originally bred by Morgoth during the First Age to serve as powerful war beasts. Glaurung (Sindarin for "Gold-worm") was the first of the dragons and one of the foremost lieutenants of Morgoth. He was a mighty wyrm with cunning intellect and a powerful hypnotic gaze.

BACK



DIFFICULTY:
BEGINNER

HOW DO I GET ONE?
Trade or barter with me at the minibadge trading space.

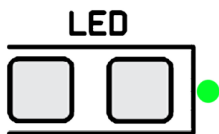
RARITY:
RARE

ASSEMBLY INSTRUCTIONS:

1. Solder the LEDs. (green marking goes inside the silkscreen box or towards the dot)
 - D1: Orange LED (looks best when mounted upside down)
 - D2 and D3: Aqua LEDs (look best when mounted sideways, pointing towards the center)
2. Solder the resistors.
 - R1: 150 ohm (orange circle)
 - R2 and R3: 15 ohm (aqua circles)
3. Solder the 2-pin headers.

BOARD/LED TYPE:

PARTS USED:



FRONT



PERSONAL MINIBADGE

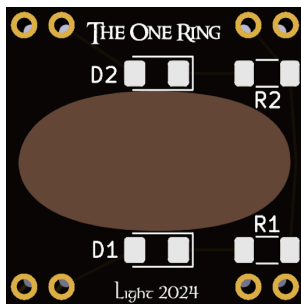
The One Ring

Designed By: Light

One Ring to rule them all, One Ring to find them,
One Ring to bring them all and in the darkness bind them.

This ring is part of a set. Talk to Moomoo and TheTrollGod to collect Narya and Vilya.

BACK



DIFFICULTY:
BEGINNER

RARITY:
RARE

HOW DO I GET ONE?
Trade or barter with me at the minibadge trading space.

ASSEMBLY INSTRUCTIONS:

1. Solder the through-hole LED to the D1 SMD pads. (Leave D2 empty.)
- The short leg goes inside the silkscreen box.
- Bend the legs so the LED curves in toward the center of the oval.
2. Solder the resistor to the R1 pad. (Leave R2 empty.)
3. Solder the 2-pin headers.
4. Cover the entire oval with hot glue (provided at the Hardware Hacking Community).

BOARD/LED TYPE:

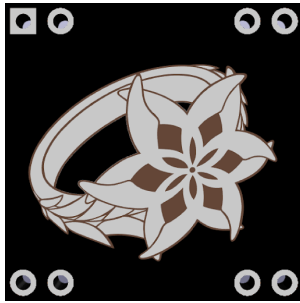
PARTS USED:



PART OF SET:

Rings of Power
Badge 1 of 4

FRONT



PERSONAL MINIBADGE

Nenya - Ring of Water

Designed By: Light

Nenya, the Ring of Water, was crafted by Celebrimbor of Eregion along with the other two Elven Rings, Narya and Vilya. After learning of the One Ring's existence, Galadriel advised Celebrimbor to keep the rings hidden and unused. He heeded this counsel, first by giving Nenya to Galadriel. Its powers of preservation, protection, and concealment from evil strengthened and beautified Lothlórien until the One Ring's destruction and Sauron's defeat.

This ring is part of a set. Talk to Moomoo and TheTrollGod to collect Narya and Vilya.

BACK



DIFFICULTY:

BEGINNER

HOW DO I GET ONE?

Trade or barter with me at the minibadge trading space.

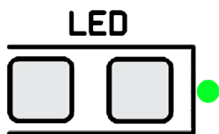
RARITY:

RARE

ASSEMBLY INSTRUCTIONS:

1. Solder the LEDs on D1 and D2 (green marking goes inside the silkscreen box).
2. Solder the resistors on R1 and R2 (any orientation).
3. Solder the 2-pin headers.
4. Cover the LEDs and unmasked area on the back with hot glue (provided at the Hardware Hacking Community).

BOARD/LED TYPE:



PARTS USED:

PART OF SET:

Rings of Power
Badge 2 of 4

FRONT



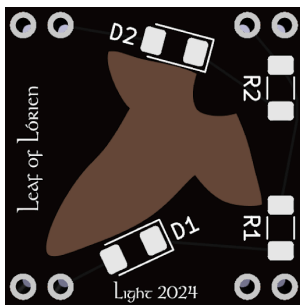
PERSONAL MINIBADGE

Leaf of Lórien

Designed By: Light

Elven brooches were given to all nine members of the Fellowship of the Ring and were used to fasten the hooded cloaks made for them by Galadriel. Each brooch was fashioned like a green leaf veined with silver.

BACK



DIFFICULTY:
BEGINNER

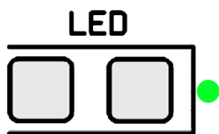
HOW DO I GET ONE?
Trade or barter with me at the minibadge trading space.

RARITY:
RARE

ASSEMBLY INSTRUCTIONS:

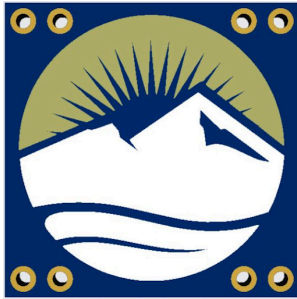
1. Solder the LEDs on D1 and D2 (green marking goes inside the silkscreen box).
2. Solder the resistors on R1 and R2 (any orientation).
3. Solder the 2-pin headers.
4. Cover the LEDs and unmasked area on the back with hot glue (provided at the Hardware Hacking Community).

BOARD/LED TYPE:



PARTS USED:

FRONT



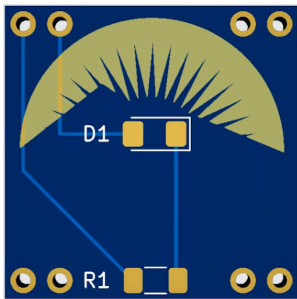
PERSONAL MINIBADGE

Provo City

Designed By: Master Mapper

Now that you are enjoying Saintcon in Provo, you definitely need to get one of these to add to your collection. This is part of the Provo City logo.

BACK



DIFFICULTY:

BEGINNER

RARITY:

UNCOMMON

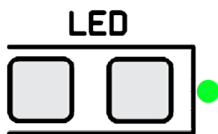
HOW DO I GET ONE?

Several people will have them to trade or give away, just ask. Some will also be at the Vault Challenge area.

ASSEMBLY INSTRUCTIONS:

Solder the LED first, using the single pad method for hand soldering.
Solder the resistor using the single pad method for hand soldering.
Solder the Pin headers to the badge.

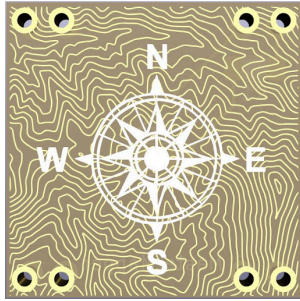
BOARD/LED TYPE:



PARTS USED:

- 1206 LED Blue
- 1206 Resistor 10R0
- FR4 PCB
- 2-Pin Pin Headers

FRONT



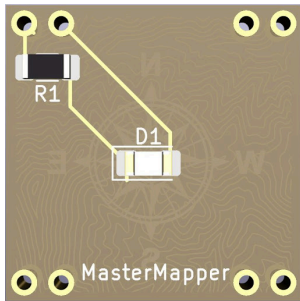
PERSONAL MINIBADGE

Map Compass

Designed By: MasterMapper

I really like maps and thought this could be a fun one. Perhaps I will make is a series and a new map element every year.

BACK



DIFFICULTY:

BEGINNER

HOW DO I GET ONE?

Ask or trade

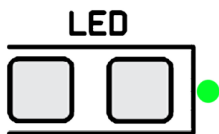
RARITY:

SUPER RARE

ASSEMBLY INSTRUCTIONS:

- DO NOT SOLDER THESE LED'S AT OVER 300 DEGREES CELSIUS OR THEY WILL MELT!
- Solder the LEDs first, using the single-pad method for hand soldering.
- Solder the resistor using the single-pad method for hand soldering.
- Solder the Pin Headers to the Badge.

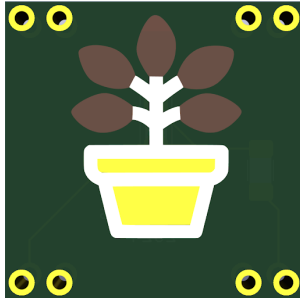
BOARD/LED TYPE:



PARTS USED:

- 1206 LED
- 1206 RESISTOR
- FR4 PCB
- 2-Pin Pin Headers

FRONT



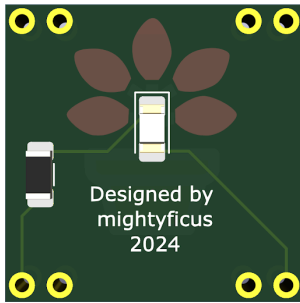
PERSONAL MINIBADGE

The Mightiest Ficus

Designed By: Mightyficus

This is my eponymous ficus, and the first badge I've ever designed. If you trade me with something cool, I'll give you a sticker too!

BACK



DIFFICULTY:

BEGINNER

HOW DO I GET ONE?

Trade with me or Bribe me with something cool

RARITY:

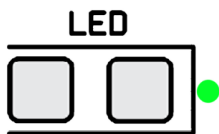
SUPER RARE

ASSEMBLY INSTRUCTIONS:

Solder using the single pad method. It will come with one green LED and one 51 Ohm resistor. The LED goes in the middle, and the resistor is on the side

BOARD/LED TYPE:

PARTS USED:



FRONT



PERSONAL MINIBADGE

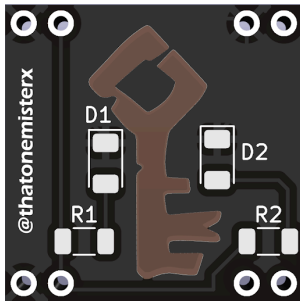
Gold Hoarder Badge

Designed By: Mister X

Part of the Sea of Thieves minibadge set.

Have you wanted to gold on an adventure looting vaults and solving riddles to find buried chests? Consider representing the Gold Hoarders, a faction whose sole purpose is to swimming in wealth.

BACK



DIFFICULTY:

BEGINNER

RARITY:

SUPER RARE

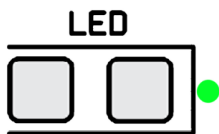
HOW DO I GET ONE?

Trade with me, or if you don't have a minibadge to trade, I'll be happy to give you one.

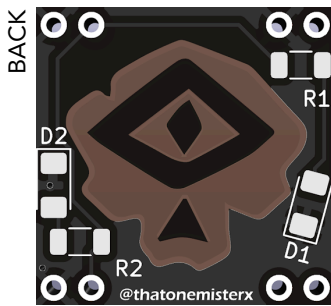
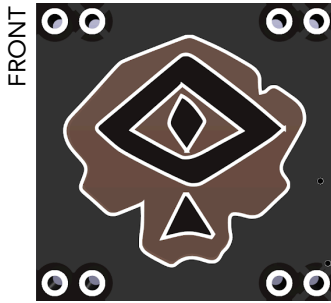
ASSEMBLY INSTRUCTIONS:

- Begin on the back side first.
- Solder the two LEDs first, using the single-pad method for hand soldering.
- Solder the two Resistors using the same single-pad method for hand soldering.
- Solder the 4x 2-Position headers, with the Gold Hoarder artwork facing out.

BOARD/LED TYPE:



PARTS USED:



PERSONAL MINIBADGE

Order of Souls Badge

Designed By: Mister X

Part of the Sea of Thieves minibadge set.

Have you wanted to defeat skeletons and discover the secrets of an ancient past? Consider representing the Order of Souls where they are committed to uncovering the mysteries of a lost past.

DIFFICULTY:

BEGINNER

RARITY:

SUPER RARE

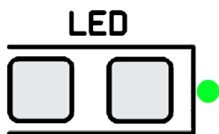
HOW DO I GET ONE?

Trade with me, or if you don't have a minibadge to trade, I will be happy to give you one for free.

ASSEMBLY INSTRUCTIONS:

- Begin on the back side first.
- Solder the two LEDs first, using the single-pad method for hand soldering.
- Solder the two Resistors using the same single-pad method for hand soldering.
- Solder the 4x 2-Position headers, with the Order of Souls artwork facing out.

BOARD/LED TYPE:

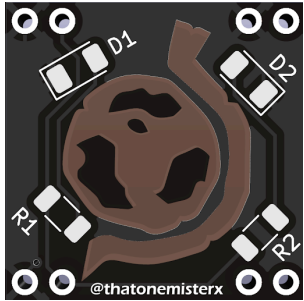


PARTS USED:

FRONT



BACK



PERSONAL MINIBADGE

Merchant Alliance Badge

Designed By: Mister X

Part of the Sea of Thieves minibadge set.

Have you ever longed for the thrill of protecting the precious cargo of the Crown? Consider joining the Merchant Alliance, whose prestige comes with the honor of keeping the cargo of the Crown out of the grasps of pirates.

DIFFICULTY:

BEGINNER

RARITY:

SUPER RARE

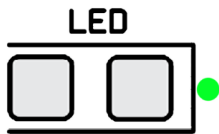
HOW DO I GET ONE?

Trade with me, or if you don't have a badge to trade, I'll be happy to give you the badge for free.

ASSEMBLY INSTRUCTIONS:

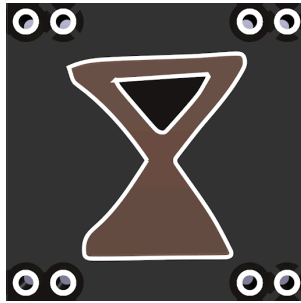
- Begin on the back side first.
- Solder the two LEDs first, using the single-pad method for hand soldering.
- Solder the two Resistors using the same single-pad method for hand soldering.
- Solder the 4x 2-Position headers, with the Merchant Alliance artwork facing out.

BOARD/LED TYPE:



PARTS USED:

FRONT



PERSONAL MINIBADGE

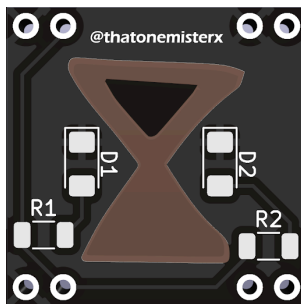
Reaper's Bones Badge

Designed By: Mister X

Part of the Sea of Thieves minibadge set.

Have you ever wanted to sink helpless vessels without any repercussions? Pledge yourself to the Reaper's Bones where they keep the pirate dream alive while fighting off the Pirate Lord's forces.

BACK



DIFFICULTY:

BEGINNER

RARITY:

SUPER RARE

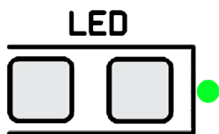
HOW DO I GET ONE?

Trade with me, or if you don't have a badge to trade, I'll be happy to give you the badge for free.

ASSEMBLY INSTRUCTIONS:

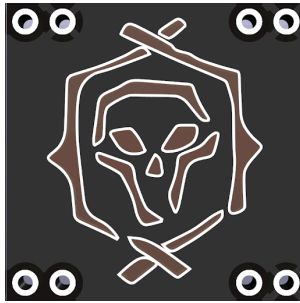
- Begin on the back side first.
- Solder the two LEDs first, using the single-pad method for hand soldering.
- Solder the two Resistors using the same single-pad method for hand soldering.
- Solder the 4x 2-Position headers, with the Reaper's Bones artwork facing out.

BOARD/LED TYPE:



PARTS USED:

FRONT



PERSONAL MINIBADGE

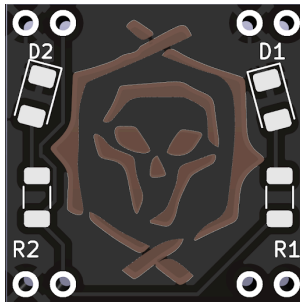
Athena's Fortune Badge

Designed By: Mister X

Part of the Sea of Thieves minibadge set.

Do you feel like rising above the ranks of a normal swabbie to a Pirate Legend? After hitting level 50 in three different factions, become a Pirate Legend to liberate the seas from the Reaper's grasp.

BACK



DIFFICULTY:

BEGINNER

RARITY:

SUPER RARE

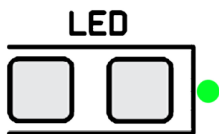
HOW DO I GET ONE?

Similar to the game, show me proof of completing three of the other faction badges, (Gold Hoarder, Order of Souls, Merchant Alliance, or Reaper's Bones), to receive this exclusive minibadge.

ASSEMBLY INSTRUCTIONS:

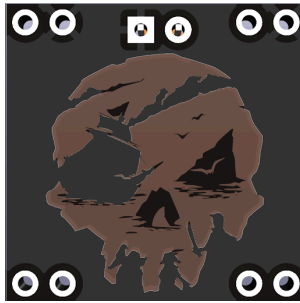
- Begin on the back side first.
- Solder the two LEDs first, using the single-pad method for hand soldering.
- Solder the two Resistors using the same single-pad method for hand soldering.
- Solder the 4x 2-Position headers, with the Athena's Fortune artwork facing out.

BOARD/LED TYPE:



PARTS USED:

FRONT



PERSONAL MINIBADGE

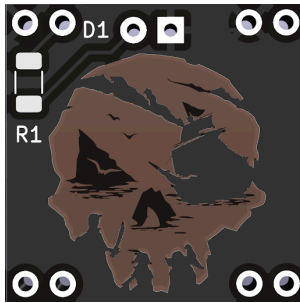
Sea of Thieves Minibadge

Designed By: Mister X

Part of the Sea of Thieves minibadge set.

This is the official logo of my favorite game "Sea of Thieves" by Rare Ltd. I've played the game for almost four years and I've enjoyed it to the point I've dedicated an entire minibadge set to it.

BACK



DIFFICULTY:

BEGINNER

RARITY:

SUPER RARE

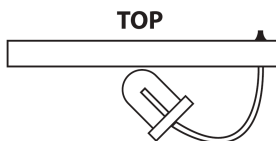
HOW DO I GET ONE?

Trade with me, or if you don't have a badge to trade, I'll be happy to give you the badge for free.

ASSEMBLY INSTRUCTIONS:

- Begin on the back side first.
- Solder the two LEDs first, using the single-pad method for hand soldering.
- Solder the two Resistors using the same single-pad method for hand soldering.
- Solder the 4x 2-Position headers, with the Sea of Thieves artwork facing out.

BOARD/LED TYPE:



PARTS USED:

FRONT



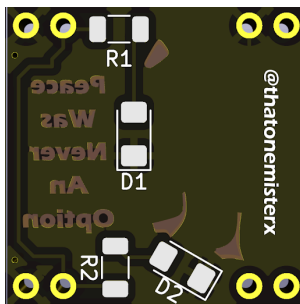
PERSONAL MINIBADGE

Peace Was Never an Option Badge

Designed By: Mister X

This minibadge was inspired by the game "Untitled Goose Game".

BACK



DIFFICULTY:

BEGINNER

RARITY:

RARE

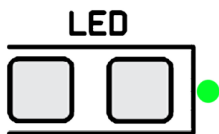
HOW DO I GET ONE?

Trade with me, or if you don't have a badge to trade, I'll be happy to give you the badge for free.

ASSEMBLY INSTRUCTIONS:

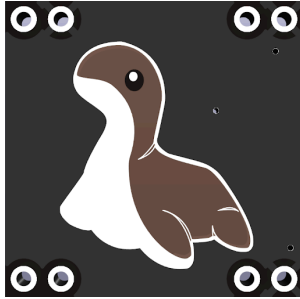
- Begin on the back side first.
- Solder the two LEDs first, using the single-pad method for hand soldering.
- Solder the two Resistors using the same single-pad method for hand soldering.
- Solder the 4x 2-Position headers, with the goose artwork facing out.

BOARD/LED TYPE:



PARTS USED:

FRONT



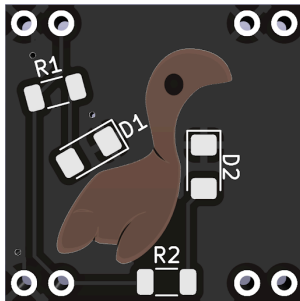
PERSONAL MINIBADGE

Nessie Badge

Designed By: Mister X

The inspiration for this minibadge came from the Nessie plush from Apex Legends. This is probably one of the cutest designs I've gotten to do.

BACK



DIFFICULTY:

BEGINNER

RARITY:

SUPER RARE

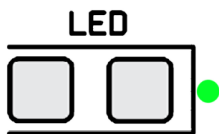
HOW DO I GET ONE?

Trade with me, or if you don't have any badges to trade, I would be glad to give you one for free.

ASSEMBLY INSTRUCTIONS:

- Begin on the back side first.
- Solder the two LEDs first, using the single-pad method for hand soldering.
- Solder the two Resistors using the same single-pad method for hand soldering.
- Solder the 4x 2-Position headers, with the Nessie artwork facing out.

BOARD/LED TYPE:



PARTS USED:

FRONT



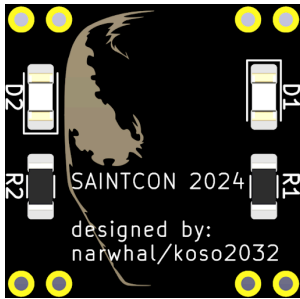
PERSONAL MINIBADGE

Spider-Man and Venom

Designed By: narwhal/koso2032

As a long-time Spider-Man fan, I've recently been drawn to the comics. I've been exploring the stories of Venom and Carnage, and the fascinating Spider-Man Venom combo that I experienced in Marvel's Spider-Man 2 video game. This journey into Spider-Man lore has been so captivating that it's even influenced my other hobbies, such as Lego and pinball machines and now with my first mini-badge.

BACK



DIFFICULTY:
BEGINNER

RARITY:
RARE

HOW DO I GET ONE?
Trade/Ask. I work at UVU so anyone giving out UVU mini-badges will know how to get a hold of me.

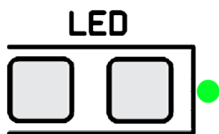
ASSEMBLY INSTRUCTIONS:

56 ohm resistor goes on R1, LED with the green corner(or red sharpie on the front of the disposable LED packaging) goes into D1.

10 ohm resistor goes on R2, LED with the green line goes into D2.

White should flash through Venom's eye and red should be a solid color led on Spider-Man's side.

BOARD/LED TYPE:



PARTS USED:

FRONT



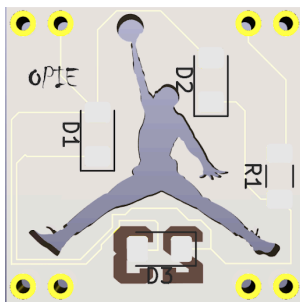
PERSONAL MINIBADGE

AirJordan Jumpman

Designed By: Opie

This is a tribute to the best basketball player of all time.

BACK



DIFFICULTY:
INTERMEDIATE

HOW DO I GET ONE?

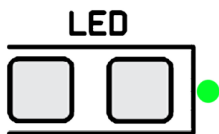
Trade with me, or come and find me while they last.

RARITY:
SUPER RARE

ASSEMBLY INSTRUCTIONS:

Please visit <https://sites.google.com/view/opie-saintcon-minibadges-2024> for instructions on how to assemble this badge.

BOARD/LED TYPE:



PARTS USED:

FRONT



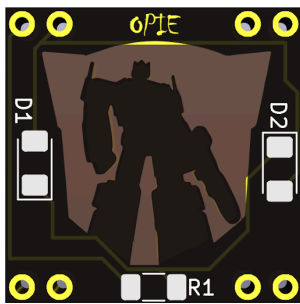
PERSONAL MINIBADGE

AutoBot Optimus Prime

Designed By: Opie

One of my favorite toys as a kid was Transformers. I know this dates me. Optimus Prime was one of my favorite Transformers.

BACK



DIFFICULTY:

INTERMEDIATE

HOW DO I GET ONE?

Trade with me, or come and find me while they last

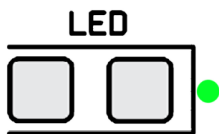
RARITY:

SUPER RARE

ASSEMBLY INSTRUCTIONS:

Please visit <https://sites.google.com/view/opie-saintcon-minibadges-2024> for instructions on how to build this and my other minibadges.

BOARD/LED TYPE:



PARTS USED:

FRONT

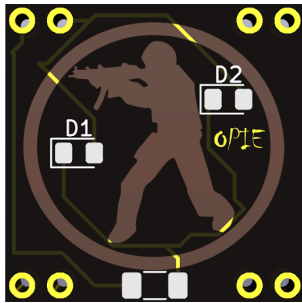


PERSONAL MINIBADGE

CounterStrike

Designed By: Opie
CounterStrike is one of my favorite PC games.

BACK



DIFFICULTY:
INTERMEDIATE

HOW DO I GET ONE?
Trade with me or come and find me.

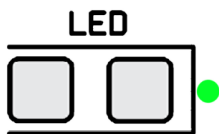
RARITY:
SUPER RARE

ASSEMBLY INSTRUCTIONS:

Please visit <https://sites.google.com/view/opie-saintcon-minibadges-2024> for instructions on how to build this and my other minibadges.

BOARD/LED TYPE:

PARTS USED:



FRONT



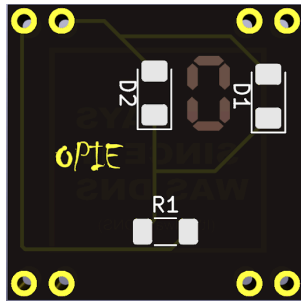
PERSONAL MINIBADGE

Always DNS

Designed By: Opie

The issue always relates to DNS!! At least it is always a DNS issue in my office :)

BACK



DIFFICULTY:
INTERMEDIATE

HOW DO I GET ONE?
Trade with me or come and find me

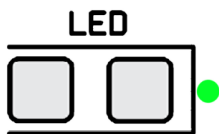
RARITY:
SUPER RARE

ASSEMBLY INSTRUCTIONS:

Please visit <https://sites.google.com/view/opie-saintcon-minibadges-2024> for instructions on how to build this and my other minibadges.

BOARD/LED TYPE:

PARTS USED:



FRONT



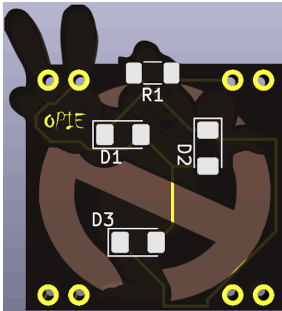
PERSONAL MINIBADGE

GhostBusters 2

Designed By: Opie

Last year I designed the GhostBusters badge. This year I had to do the GhostBusters 2 badge.

BACK



DIFFICULTY:
INTERMEDIATE

HOW DO I GET ONE?
Trade with me or come and find me.

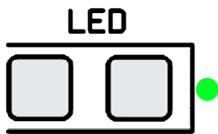
RARITY:
SUPER RARE

ASSEMBLY INSTRUCTIONS:

Please visit <https://sites.google.com/view/opie-saintcon-minibadges-2024> for instructions on how to build this and my other minibadges.

BOARD/LED TYPE:

PARTS USED:



FRONT

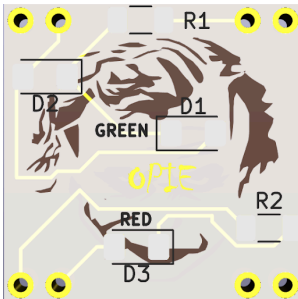


PERSONAL MINIBADGE

Joker

Designed By: Opie
Why so Serious!!!

BACK



DIFFICULTY:
INTERMEDIATE

HOW DO I GET ONE?
Trade with me or come and find me.

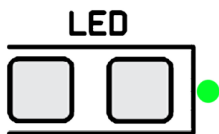
RARITY:
SUPER RARE

ASSEMBLY INSTRUCTIONS:

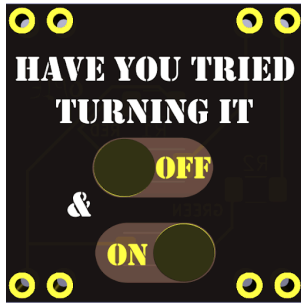
Please visit <https://sites.google.com/view/opie-saintcon-minibadges-2024> for instructions on how to build this and my other minibadges.

BOARD/LED TYPE:

PARTS USED:



FRONT



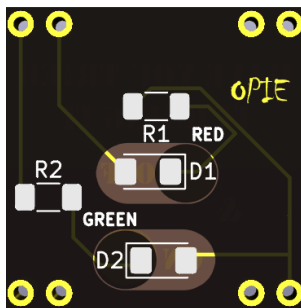
PERSONAL MINIBADGE

Power Cycle

Designed By: Opie

We all have had users saying things didn't work. This badge is designed for the easy fix.

BACK



DIFFICULTY:
INTERMEDIATE

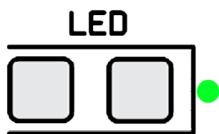
HOW DO I GET ONE?
Trade with me or come and find me.

RARITY:
SUPER RARE

ASSEMBLY INSTRUCTIONS:

Please visit <https://sites.google.com/view/opie-saintcon-minibadges-2024> for instructions on how to build this and my other minibadges.

BOARD/LED TYPE:



PARTS USED:

FRONT



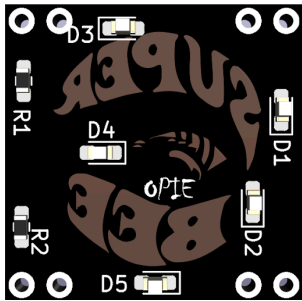
PERSONAL MINIBADGE

SuperBee

Designed By: Opie

This is for all the car fanatics especially muscle cars. This is the logo for the Dodge SuperBee and since I own a Dodge Charger SuperBee, (which is 1 of 425 cars made) I wanted to do a MiniBadge with this logo.

BACK



DIFFICULTY:
ADVANCED

HOW DO I GET ONE?
Trade with me or come and find me.

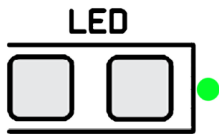
RARITY:
SUPER RARE

ASSEMBLY INSTRUCTIONS:

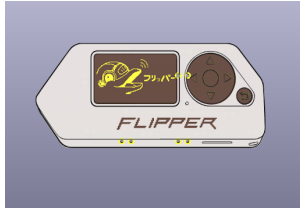
Please visit <https://sites.google.com/view/opie-saintcon-minibadges-2024> for instructions on how to build this and my other minibadges.

BOARD/LED TYPE:

PARTS USED:



FRONT

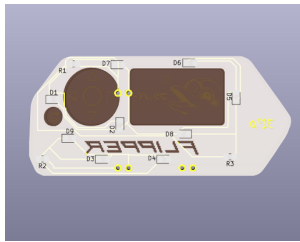


PERSONAL MINIBADGE

Flipper Zero

Designed By: Opie
Here is a minibadge of the infamous Flipper Zero.

BACK



DIFFICULTY:
INTERMEDIATE

HOW DO I GET ONE?
Trade with me.

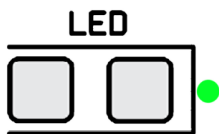
RARITY:
SUPER RARE

ASSEMBLY INSTRUCTIONS:

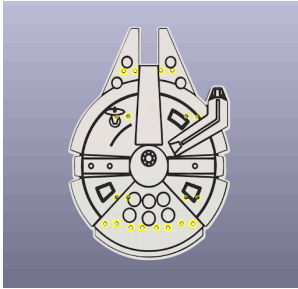
Please visit <https://sites.google.com/view/opie-saintcon-minibadges-2024> for instructions on how to build this and my other minibadges.

BOARD/LED TYPE:

PARTS USED:



FRONT



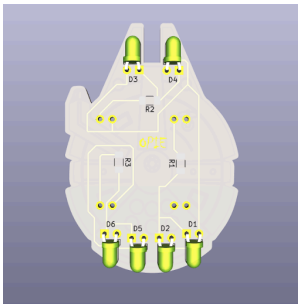
PERSONAL MINIBADGE

Millennium Falcon

Designed By: Opie

I love StarWars and I wanted to make a StarWars badge. This is for the ship that made the Kessel Run in under 12 parsecs.

BACK



DIFFICULTY:
INTERMEDIATE

HOW DO I GET ONE?
Trade with me.

RARITY:
SUPER RARE

ASSEMBLY INSTRUCTIONS:

Please visit <https://sites.google.com/view/opie-saintcon-minibadges-2024> for instructions on how to build this and my other minibadges.

BOARD/LED TYPE:

PARTS USED:



FRONT



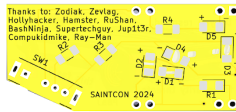
PERSONAL MINIBADGE

Mach1

Designed By: PB&J

I love sports & muscle cars & most things that go fast. I also like to keep data safe. I just wish that I could drive to the scene of every data-security breach or file restoration event that I have to deal with in a car as awesome as a '72 Mach1.

BACK



DIFFICULTY:

INTERMEDIATE

HOW DO I GET ONE?

Find me & trade something, tell me about your favorite car, whether you ever owned that one or not.

RARITY:

RARE

ASSEMBLY INSTRUCTIONS:

Watch my video first.

Solder the 750 Ohm resistors and then the 221 Ohm, then the 51 Ohm resistor. Now, solder D1 and D2 (orange LEDs) upside down, then the white ones (D3 & D4), also upside down. Then, solder D5 (it should be marked w/orange on the back of the package) either on its' side or right side up and run a bead of hot glue from D5 to both rectangles (the grill lights) between D3 & D4. Next, solder the switch with the slide pointing away from the PCB on the back side of the PCB. Lastly, solder the pins in place & enjoy!

BOARD/LED TYPE:



PARTS USED:

- PCB - 1, Switch - 1
- LED, white, size 1206 - 2 (D3, D4)
- LED, orange, size 0805 - 2 (D1, D2)
- LED, orange, size 1206 - 1 (D5)
- Resistor, 751 Ohm - 2 (R1, R4)
- Resistor, 221 Ohm - 1 (R2), Resistor, 51 Ohm - 1 (R3)

PART OF SET:

not yet??

FRONT



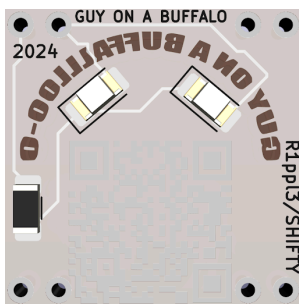
PERSONAL MINIBADGE

Guy on a Buffalo-o Minibadge

Designed By: R1ppl3/SHIFTY

Tribute minibadge to "The guy on the buffalo." (If you know you know. If you dont know, scan the QR code on the back of the badge, so you can know.)

BACK



DIFFICULTY:

BEGINNER

RARITY:

SUPER RARE

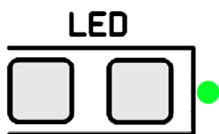
HOW DO I GET ONE?

Find R1ppl3 and trade or barter for one of these gems.

ASSEMBLY INSTRUCTIONS:

- Begin on the back side first.
- Solder the LED(s) first, using the single-pad method for hand soldering.
- Solder the Resistor(s) using the same single-pad method for hand soldering.
- Solder the 4x 2-Position headers.

BOARD/LED TYPE:



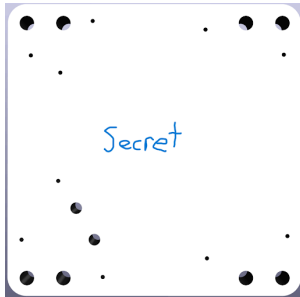
PARTS USED:

- 1206 LED
- 1206 RESISTOR
- FR4 PCB
- 2-Pin Pin Headers

Scan For
Assembly
Instructions:



FRONT



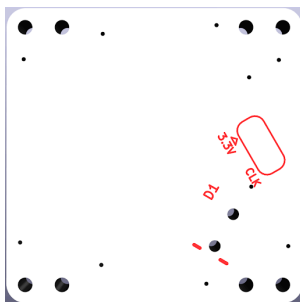
PERSONAL MINIBADGE

2024 Butterfly

Designed By: RuShan

This is my yearly butterfly minibadge with a fun 3D print addition.

BACK



DIFFICULTY:

BEGINNER

HOW DO I GET ONE?

Talk to me for a trade or added as a bonus for supporting other projects

RARITY:

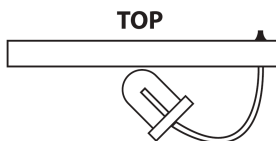
SUPER RARE

ASSEMBLY INSTRUCTIONS:

<https://www.youtube.com/@Herushan1>

BOARD/LED TYPE:

PARTS USED:



FRONT



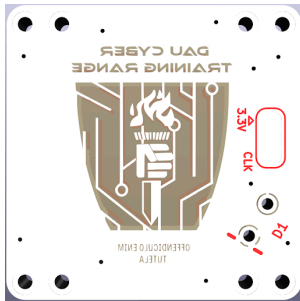
PERSONAL MINIBADGE

DAU Cyber Training Range

Designed By: RuShan

Minibadge for the DAU Cyber Enterprise Team of instructors of our range.

BACK



DIFFICULTY:

BEGINNER

HOW DO I GET ONE?

Attending my talk or member of the DoD and 4th Estate (have under 50 total)

RARITY:

SUPER RARE

ASSEMBLY INSTRUCTIONS:

www.youtube.com/@Herushan1

BOARD/LED TYPE:



PARTS USED:

FRONT



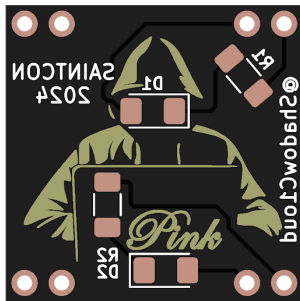
PERSONAL MINIBADGE

On Wednesdays We Wear Pink!

Designed By: ShadowC1oud

I enjoy standing out in a crowd and being bold enough to wear pink. Hoping this badge could be fun for others who enjoy their uniqueness, or common interest in the color Pink.

BACK



DIFFICULTY:
BEGINNER

RARITY:
RARE

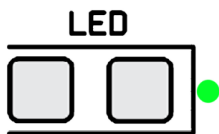
HOW DO I GET ONE?

Find me, I'll be wearing pink. Trade with me, or wear something pink. Bonus points if you wear pink on Wednesday!

ASSEMBLY INSTRUCTIONS:

- Begin on the back side first.
- Solder the LEDs first, using the single-pad method for hand soldering.
- Solder the resistor using the single-pad method for hand soldering.
- Solder the 4x 2-Position headers.

BOARD/LED TYPE:



PARTS USED:

- 2 x 1206 0 ohm resistors (<https://www.aliexpress.us/item/3256805933290218.html>)
- 2 x 1206 3v Pink LED (<https://www.aliexpress.us/item/2251832152852349.html>)

FRONT

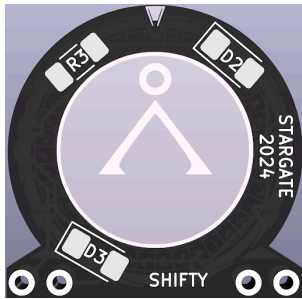


PERSONAL MINIBADGE

STARGATE Portal

Designed By: SHIFTY
Stargate Portal from the classic series.

BACK



DIFFICULTY:
INTERMEDIATE

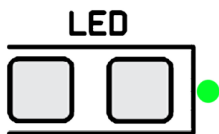
HOW DO I GET ONE?
Trade or Barter for one of these.

RARITY:
SUPER RARE

ASSEMBLY INSTRUCTIONS:

Solder the SMD LED's and Resistors using the single pad soldering method.
The Red LED goes on the tail of the rocket and is marked by Red on its packaging. It can be a little tricky to get it to stay still while soldering.

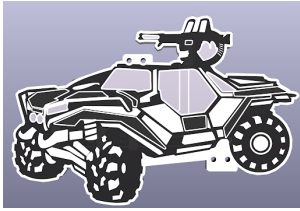
BOARD/LED TYPE:



PARTS USED:

- 1206 LED
- 1206 RESISTOR
- FR4 PCB
- 2-Pin Pin Headers

FRONT

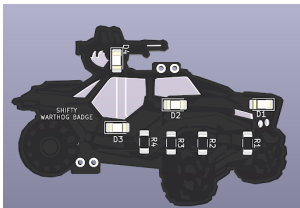


PERSONAL MINIBADGE

Warthog v2

Designed By: SHIFTY
Halo Warthog blacked out edition.

BACK



DIFFICULTY:
BEGINNER

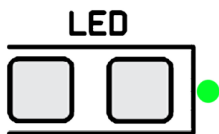
HOW DO I GET ONE?
Trade or Barter for one of these

RARITY:
SUPER RARE

ASSEMBLY INSTRUCTIONS:

- Begin on the back side first.
- Solder the LEDs first, using the single-pad method for hand soldering. (The single LED in your packet is multicolor and goes on the gun.)
- Solder the Resistors using the same single-pad method for hand soldering.
- Solder the 4x 2-Position headers.

BOARD/LED TYPE:



PARTS USED:

- 1206 LED
- 1206 RESISTOR
- FR4 PCB
- 2-Pin Pin Headers

FRONT



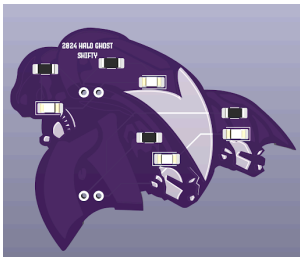
PERSONAL MINIBADGE

Halo GHOST Minibadge

Designed By: SHIFTY

Ghost vehicle from the Halo Video Game.

BACK



DIFFICULTY:

BEGINNER

HOW DO I GET ONE?

Trade or barter for one of these

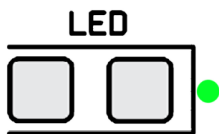
RARITY:

SUPER RARE

ASSEMBLY INSTRUCTIONS:

- Begin on the back side first.
- Solder the LEDs first, using the single-pad method for hand soldering. (The single LED in your packet goes on the back. The two packed together are for the guns.)
- Solder the Resistors using the same single-pad method for hand soldering.
- Solder the 4x 2-Position headers.

BOARD/LED TYPE:



PARTS USED:

- 1206 LED
- 1206 RESISTOR
- FR4 PCB
- 2-Pin Pin Headers

FRONT



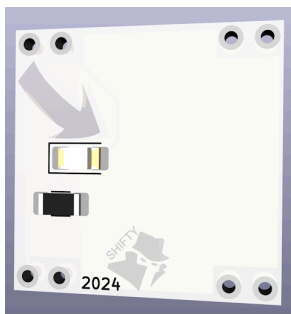
PERSONAL MINIBADGE

Wicked Awesome Minibadge

Designed By: SHIFTY

Did you wonder if there was going to be a wicked awesome minibadge at Saintcon this year? Well.... Here it is. Right in front of you. While supplies last.

BACK



DIFFICULTY:

BEGINNER

RARITY:

SUPER RARE

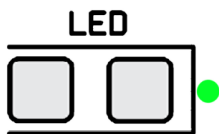
HOW DO I GET ONE?

Come up and say, "So... I heard you have a WICKED AWESOME MINIBADGE!" And you will be one of the few people cool enough to get one.

ASSEMBLY INSTRUCTIONS:

- Begin on the back side first.
- Solder the LED(s) first, using the single-pad method for hand soldering.
- Solder the Resistor(s) using the same single-pad method for hand soldering.
- Solder the 4x 2-Position headers.

BOARD/LED TYPE:



PARTS USED:

1206 LED
 1206 RESISTOR
 FR4 PCB
 2-Pin Pin Headers

FRONT



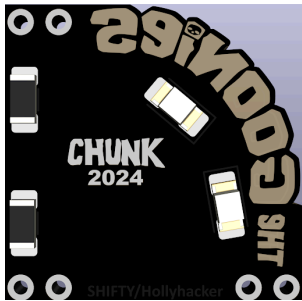
PERSONAL MINIBADGE

CHUNK GOONIES Minibadge

Designed By: SHIFTY

Chunk is a longrunning fan of the Goonies.

BACK



DIFFICULTY:

BEGINNER

HOW DO I GET ONE?

Ask him for a piece of the treasure!

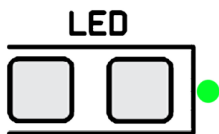
RARITY:

SUPER RARE

ASSEMBLY INSTRUCTIONS:

- Begin on the back side first.
- Solder the LED(s) first, using the single-pad method for hand soldering.
- Solder the Resistor(s) using the same single-pad method for hand soldering.
- Solder the 4x 2-Position headers.

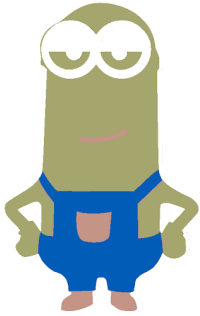
BOARD/LED TYPE:



PARTS USED:

- 1206 LED
- 1206 RESISTOR
- FR4 PCB
- 2-Pin Pin Headers

FRONT



PERSONAL MINIBADGE

Minions Kevin

Designed By: SHIFTY/Hollyhacker

Even the 5 year old in our house knows what a minibadge is. When the 5 year old asks why their isn't a Minion minibadge in dads collection. He had to correct that problem.

BACK



DIFFICULTY:
INTERMEDIATE

RARITY:
RARE

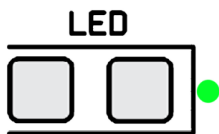
HOW DO I GET ONE?

Find Hollyhacker, Trade, Ask me , speak minionese , discord ...

ASSEMBLY INSTRUCTIONS:

Basic SMD Pad Soldering, I marked it as intermediate because their is quite a few pieces

BOARD/LED TYPE:



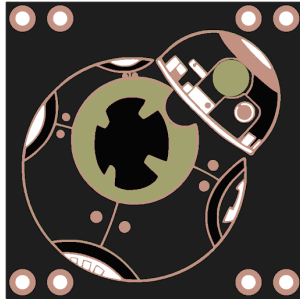
PARTS USED:

3X 1206 100R Resistors

3X WHITE SMD 1206 LED

You would think yellow made sense but it looks better with white because of the yellow coloring of the board

FRONT



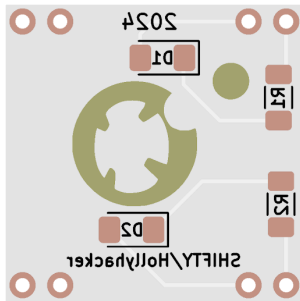
PERSONAL MINIBADGE

BB-8

Designed By: SHIFTY/Hollyhacker

Who better than our amazing robot friend who rolls around with ease to bring encouragement and support to our lives.

BACK



DIFFICULTY:
BEGINNER

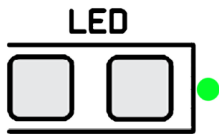
HOW DO I GET ONE?
Find SHIFTY/Hollyhacker

RARITY:
RARE

ASSEMBLY INSTRUCTIONS:

Basic SMD Soldering Pad Method

BOARD/LED TYPE:



PARTS USED:

- 1206 100R Resistors
 - 1206 Orange LED
- This badge has 2 colors Black or White PCB

FRONT

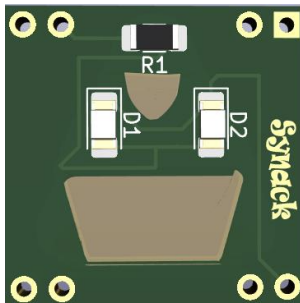


PERSONAL MINIBADGE

Hacker

Designed By: SynAck
Thought it would be a cool badge to create.

BACK



DIFFICULTY:
BEGINNER

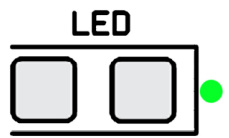
RARIETY:
SUPER RARE

HOW DO I GET ONE?
Message Me

ASSEMBLY INSTRUCTIONS:

None

BOARD/LED TYPE:



PARTS USED:

None

FRONT



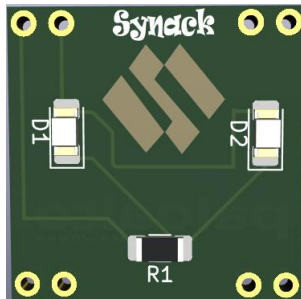
PERSONAL MINIBADGE

Palo Alto

Designed By: SynAck

Thought it would be nice to see Palo Alto represented here.

BACK



DIFFICULTY:

BEGINNER

HOW DO I GET ONE?

[Message Me](#)

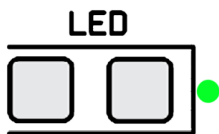
RARITY:

SUPER RARE

ASSEMBLY INSTRUCTIONS:

None

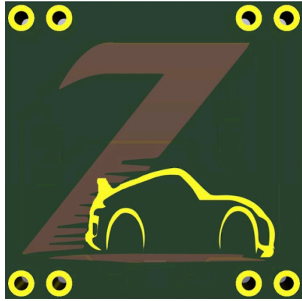
BOARD/LED TYPE:



PARTS USED:

None

FRONT

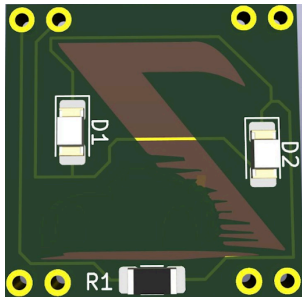


PERSONAL MINIBADGE

370 Z Trans

Designed By: SynAck
I thought this would be a cool car badge

BACK



DIFFICULTY:
BEGINNER

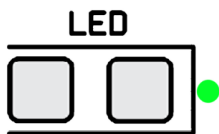
RARIETY:
SUPER RARE

HOW DO I GET ONE?
Contact me

ASSEMBLY INSTRUCTIONS:

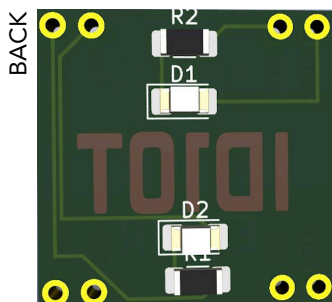
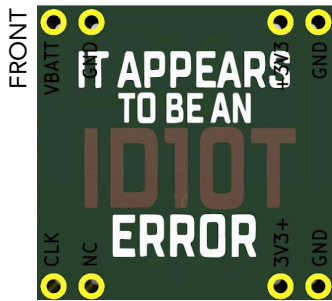
None

BOARD/LED TYPE:



PARTS USED:

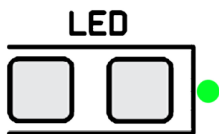
None



ASSEMBLY INSTRUCTIONS:

None

BOARD/LED TYPE:



PERSONAL MINIBADGE

ID10T Error

Designed By: SynAck

After being in IT for many years, I still hear people say this.

DIFFICULTY:
BEGINNER

RARITY:
RARE

HOW DO I GET ONE?
Contact me on Discord

PARTS USED:

FRONT



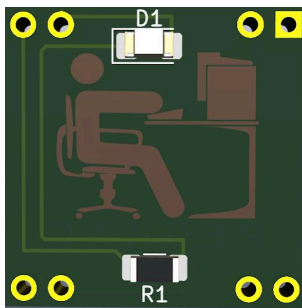
PERSONAL MINIBADGE

PEBCAC

Designed By: SynAck

After being in IT for many years, I still hear people say this.

BACK



DIFFICULTY:
BEGINNER

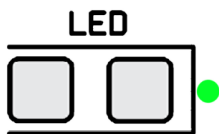
HOW DO I GET ONE?
Contact me on Discord

RARITY:
RARE

ASSEMBLY INSTRUCTIONS:

None

BOARD/LED TYPE:



PARTS USED:

FRONT



PERSONAL MINIBADGE

USU Big Blue

Designed By: tacocat
The USU Big Blue logo in minibadge form

BACK



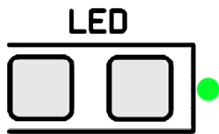
DIFFICULTY:
BEGINNER

HOW DO I GET ONE?
Trade with me

RARITY:
SUPER RARE

ASSEMBLY INSTRUCTIONS:

BOARD/LED TYPE:



PARTS USED:

FRONT



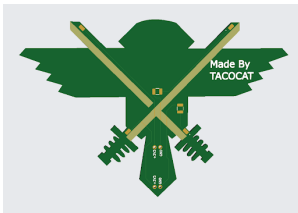
PERSONAL MINIBADGE

The Great Owl

Designed By: tacocat

Designed this for a friend and thought I'd do a very limited run of it for saintcon. This is a big minibadge 100x80 mm.

BACK



DIFFICULTY:
INTERMEDIATE

HOW DO I GET ONE?
Trade with me

RARITY:
SUPER RARE

ASSEMBLY INSTRUCTIONS:

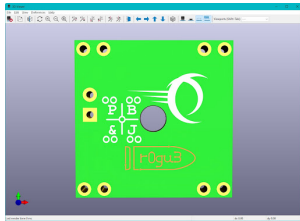
For the filaments the dots on the board line up with the holes on the solderable part of the filaments. I will include a 10 and 100 ohm resistor with these and you can do either one depending on how bright you want the swords to be.

BOARD/LED TYPE:

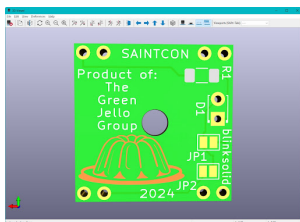
PARTS USED:



FRONT



BACK



PERSONAL MINIBADGE

Green Jello Badge

Designed By: The Green Jello Group

From the beginning, this mini badge was designed to give everyone a 'taste' of Utah-culture (this is NOT real Jello, DO NOT eat it). You can't call yourself a real Utahn until you've had green Jello with carrot shavings (you don't have to like it, just try it!). So, the next time you're at a family (or a friends' family) party, you can tell grandma you already got some green Jello! And if you end up not liking carrots in green Jello, at least you'll have the soft, green glow of this mini badge to fall asleep to!

DIFFICULTY:

BEGINNER

RARITY:

RARE

HOW DO I GET ONE?

- 1- Do some social engineering to find out who the awesome members of the Green Jello Group are;
- 2 - Trade, buy, bribe, flatter one of the GJG members until he/she gives-in.

ASSEMBLY INSTRUCTIONS:

Solder resistor to pads marked "R1" then insert the LED into the hole and bend the leads to fit into the Holes marked "D1" (shortest lead goes into the "square" hole), if you have to, trim the leads so that they don't stick out beyond the front side of the PCB. Next, place a bead of solder across either of (NOT BOTH sets) the pads marked "JP1" or "JP2" . Now, solder the pins into the holes at each corner.

BOARD/LED TYPE:



PARTS USED:

PCB w/ Jello square; one SMD resistor (100 Ohm); one 3mm, green, THT LED; eight header pins.

FRONT



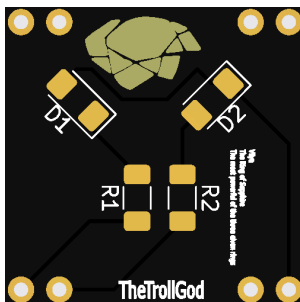
PERSONAL MINIBADGE

Vilya

Designed By: TheTrollGod

Vilya, also known as the Ring of Sapphire, the Blue Ring, or the Ring of Air, was one of the Rings of Power made by the Elves of Eregion. It was one of the Three Rings of the Elves created by Celebrimbor, along with Narya and Nenyra.

BACK



DIFFICULTY:
BEGINNER

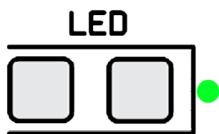
HOW DO I GET ONE?
Trade or barter with me at the minibadge trading space.

RARITY:
RARE

ASSEMBLY INSTRUCTIONS:

Match the resistor colors and LED colors together. Make sure to group the colors to one side or the other I.E. Green highlighted components are soldered to the left side pads

BOARD/LED TYPE:



PARTS USED:

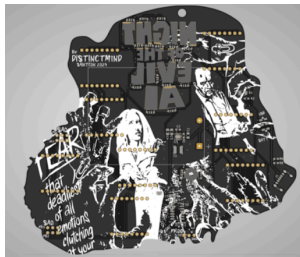
PART OF SET:

Rings of Power
Badge 3 of 4

FRONT



BACK



BADGE ACCESSORY

Night of the Evil AI Expansion Board

Designed By: distinctm1nd

This is based on the Night of the Living Dead. I thought of it when I saw mention of "evil AI" on the Saintcon badge github this year. It has an Attiny814 microcontroller and can be programmed via UPDI. It has 17 addressable LEDs and will come programmed with several LED modes. It will hold 8 minibadges and 2 SAOs. The minibadges are compliant with the version 2 standard (<https://github.com/lukejenkins/minibadge>) and the SAOs are compliant with the 1.69bis standard. This will come with a special set of minibadges that are designed to compliment the artwork.

DIFFICULTY:

BEGINNER

RARITY:

SUPER RARE

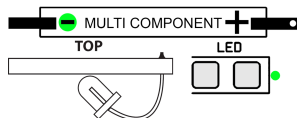
HOW DO I GET ONE?

Contact me on discord or find me at the conference

ASSEMBLY INSTRUCTIONS:

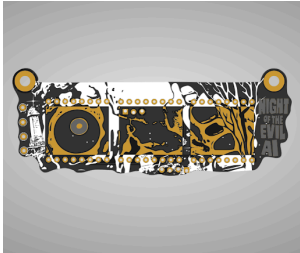
The expansion board will come mostly pre-assembled. You'll need to solder the minibadge headers and SAO connectors. There might be one minibadge that is hard; the rest should be easy to intermediate.

BOARD/LED TYPE:



PARTS USED:

FRONT



BACK



BADGE ACCESSORY

Night of the Evil AI Klip-On

Designed By: distinctm1nd

This is based on the Night of the Living Dead. I thought of it when I saw mention of "evil AI" on the Saintcon badge github this year. It has an Attiny412 microcontroller and can be programmed via UPDI. It has 9 addressable LEDs and will come programmed with several LED modes. It will hold 3 minibadges. The minibadges are compliant with the version 2 standard (<https://github.com/lukejenkins/minibadge>) and two of them are game minibadges. This badge also has 2 GPIO pins available for your own development.

DIFFICULTY:

BEGINNER

RARITY:

SUPER RARE

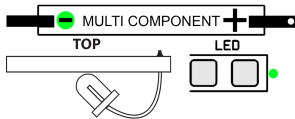
HOW DO I GET ONE?

Contact me on discord or find me at the conference.

ASSEMBLY INSTRUCTIONS:

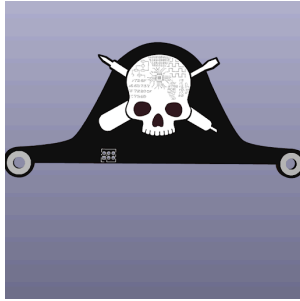
This badge will come mostly assembled. You'll need to solder the minibadge headers.

BOARD/LED TYPE:



PARTS USED:

FRONT

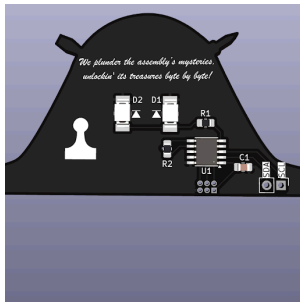


BADGE ACCESSORY

RE Badge Topper

Designed By: Professor Plum
Reverse engineering themed badge topper

BACK



DIFFICULTY:
INTERMEDIATE

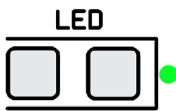
HOW DO I GET ONE?
Trade with me

RARITY:
SUPER RARE

ASSEMBLY INSTRUCTIONS:

- Solder U1, PY32 micro controller first, note pin 1 location
- Solder D1 & D2, note LED the orientation. The black mark should be towards the bottom
- Solder R1, 100 ohm (101), orientation doesn't matter
- Solder R2, 1M ohm (105), orientation doesn't matter
- Solder C1, 1uF, orientation doesn't matter

BOARD/LED TYPE:



PARTS USED:

- 1x PY32F002AA15M
- 2x LO T776, 3528 LEDs
- 1x 100 ohm 0805 resister
- 1x 1M ohm 0805 resister
- 1x 1uF 0805 capacitor

Scan For
Assembly
Instructions:



FRONT



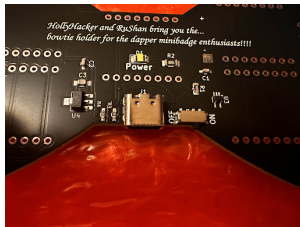
OTHER ACCESSORY

The Dapper Minibadge Bowtie

Designed By: Hollyhacker/RuShan

This amazing bowtie is a standalone display for your minibadges. It's USB powered, comes with all the fixings strap, back cover, and 95% assembled. That's right no tiny soldering points !!! Solder on your headers and you are ready to go ! We made several revisions and testing processes to ensure this works well for you. The tie includes a power LED so you always know that your power is working. The bowtie does have limited support for clock designed minibadges some work with it others dont it does not have a traditional clock circuit.

BACK



DIFFICULTY:

BEGINNER

HOW DO I GET ONE?

These bowties will be for sale in the official Saintcon Store

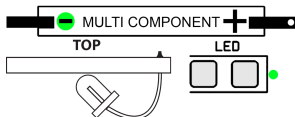
RARITY:

SUPER RARE

ASSEMBLY INSTRUCTIONS:

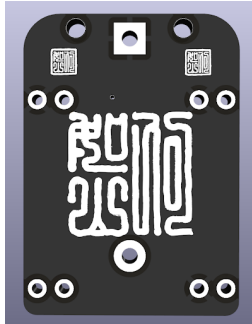
This is a 95 Assembled Display !! That's right no tiny soldering points !!! Solder on your headers and you are ready to go !

BOARD/LED TYPE:

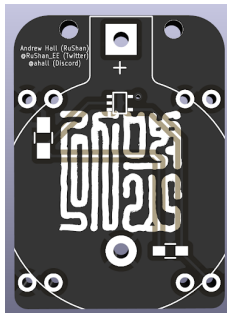


PARTS USED:

FRONT



BACK



ASSEMBLY INSTRUCTIONS:

<https://youtu.be/-dMSakdh-0s>

OTHER ACCESSORY

Portable minibadge holder (pendant or earring)

Designed By: RuShan

This is a single minibadge holder that is powered by a 2032 battery. You can use the holes in the top for wire to connect to earring hooks or to a necklace or whatever you would like. It has a clock circuit so it will work with almost all the minibadges and at least light up them all.

DIFFICULTY:

ADVANCED

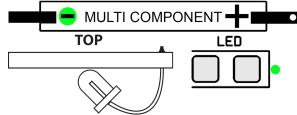
RARITY:

RARE

HOW DO I GET ONE?

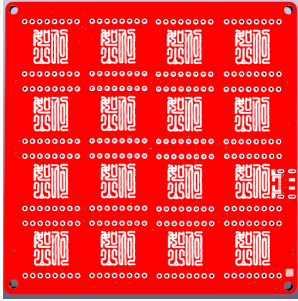
SAINTCON store (If not in store then I will have them unless sold out)

BOARD/LED TYPE:



PARTS USED:

FRONT



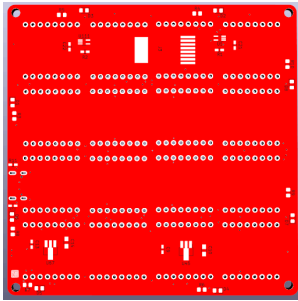
OTHER ACCESSORY

4x4 Minibadge display with MDNC

Designed By: RuShan

This is a custom 4x4 display (16 minibadges) for minibadges that is powered by USB-C or the rj45 connector to another 4x4 display which I call the MDNC. This is a complete kit with header helper that works as a stand once complete. Wanted a small display piece to put on a desk and be networkable for unique future projects. It has two separate clock circuits so you can have them the same or different speeds as I include both types of resistors in the kit.

BACK



DIFFICULTY:

ADVANCED

HOW DO I GET ONE?

SAINTCON store (DC801 will have a special version of it as well)

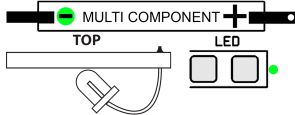
RARITY:

SUPER RARE

ASSEMBLY INSTRUCTIONS:

<https://youtu.be/Nmzs4UI-mx0>

BOARD/LED TYPE:



PARTS USED:

<https://github.com/Herushan/4x4minibadgedisplay>